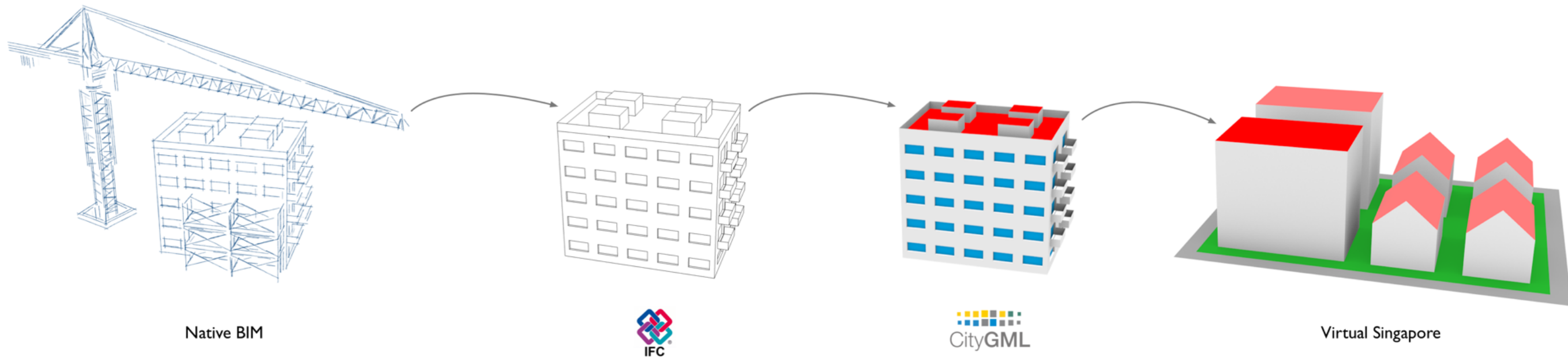


Floor plans in CityGML

Amol Konde, Helga Tauscher, Filip Biljecki, James Crawford



IFC2CityGML & Virtual Singapore



- Project leaders: Rudi Stouffs, Patrick Janssen
- Funded by the Singapore National Research Foundation and coordinated by the Singapore Government Technology Agency



- energy
- urban greening
- living environment
- waste & water
- building technology



- housing
- transport
- economy
- recreation
- identity
- public space

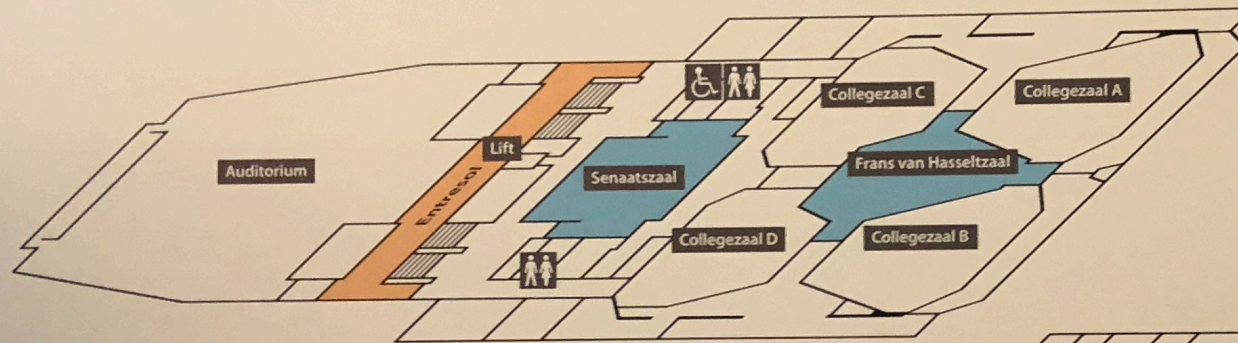


- 3D cadastre & strata
- planning
- operations
- risk management

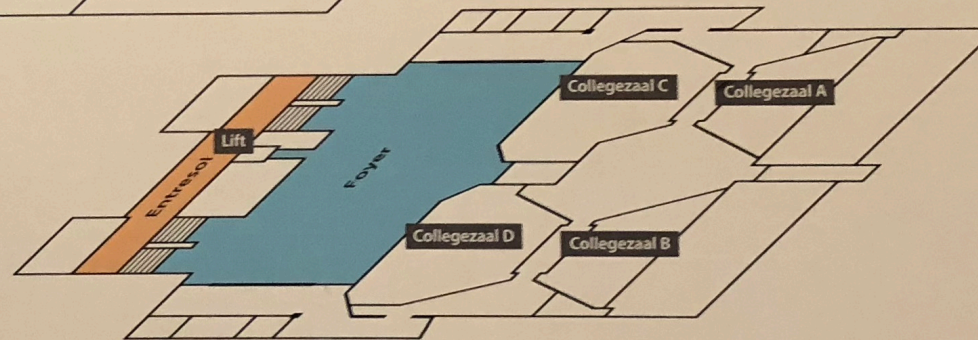


AULA CONGRESSENTRUM

02



01

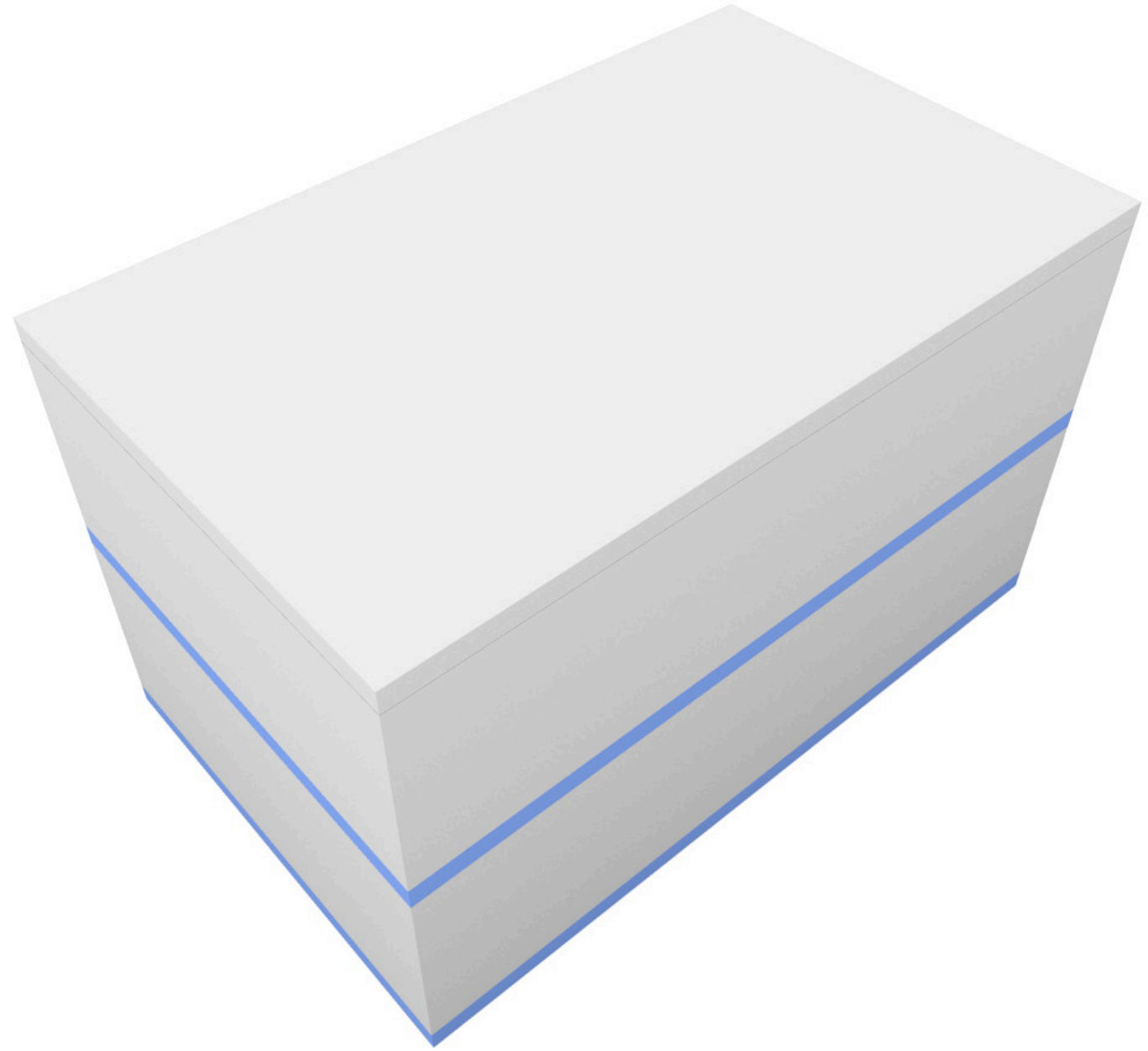


BG



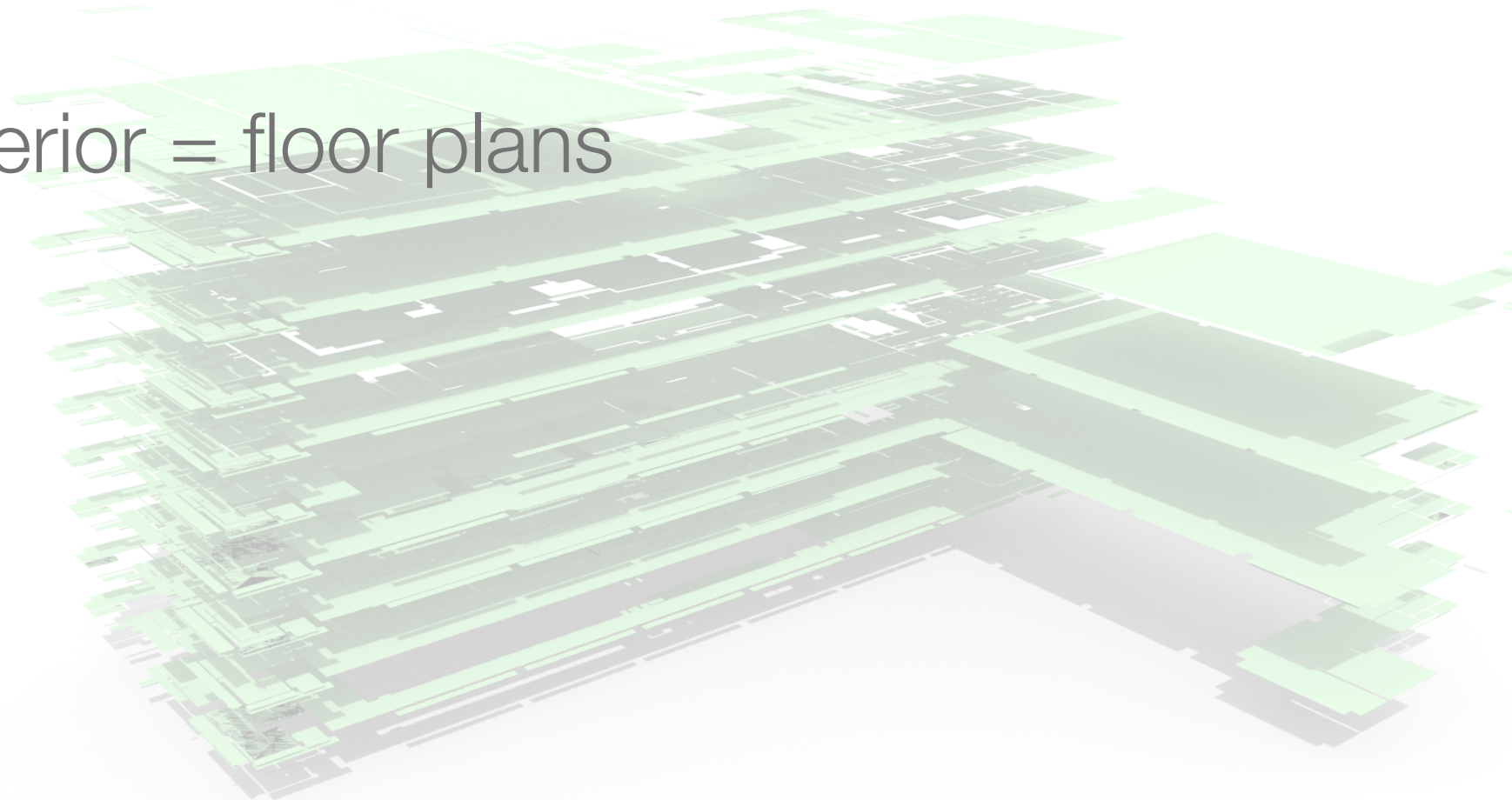
Motivation

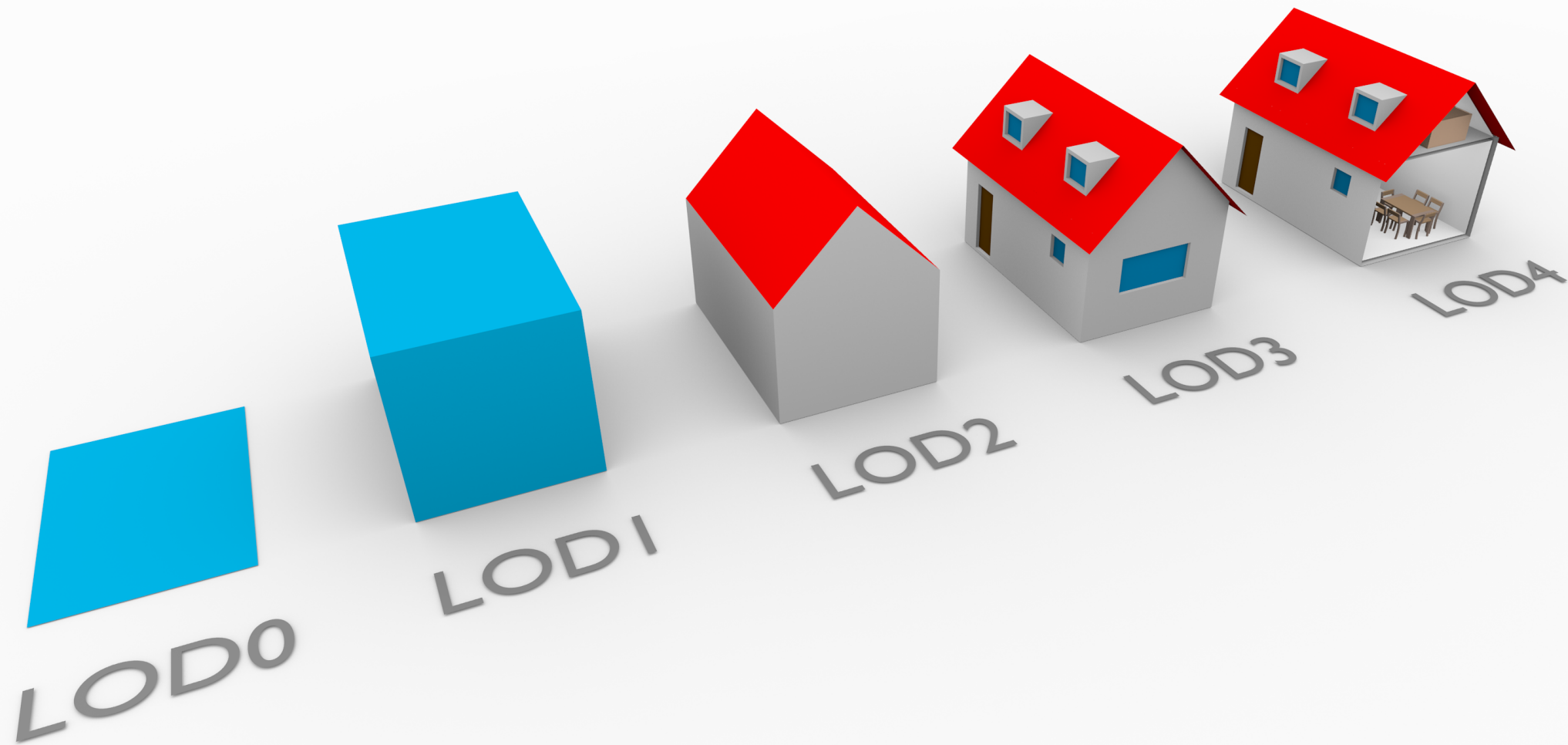
1. Papers on floor plans in GIS: almost none
2. Modelling floor plans in CityGML: topical subject
3. Not much work on sourcing floor plans from BIM
4. Not much talk on use cases in the frame of 3D GIS



CityGML and floor plans

- Floor plans and storeys not much of a topic until the development of CityGML 3.0
- LOD4 is being phased out in favour of multiple indoor levels (i.e. LOD0/1/2/3 supporting interior)
- CityGML LOD0 interior = floor plans





Current LOD proposal

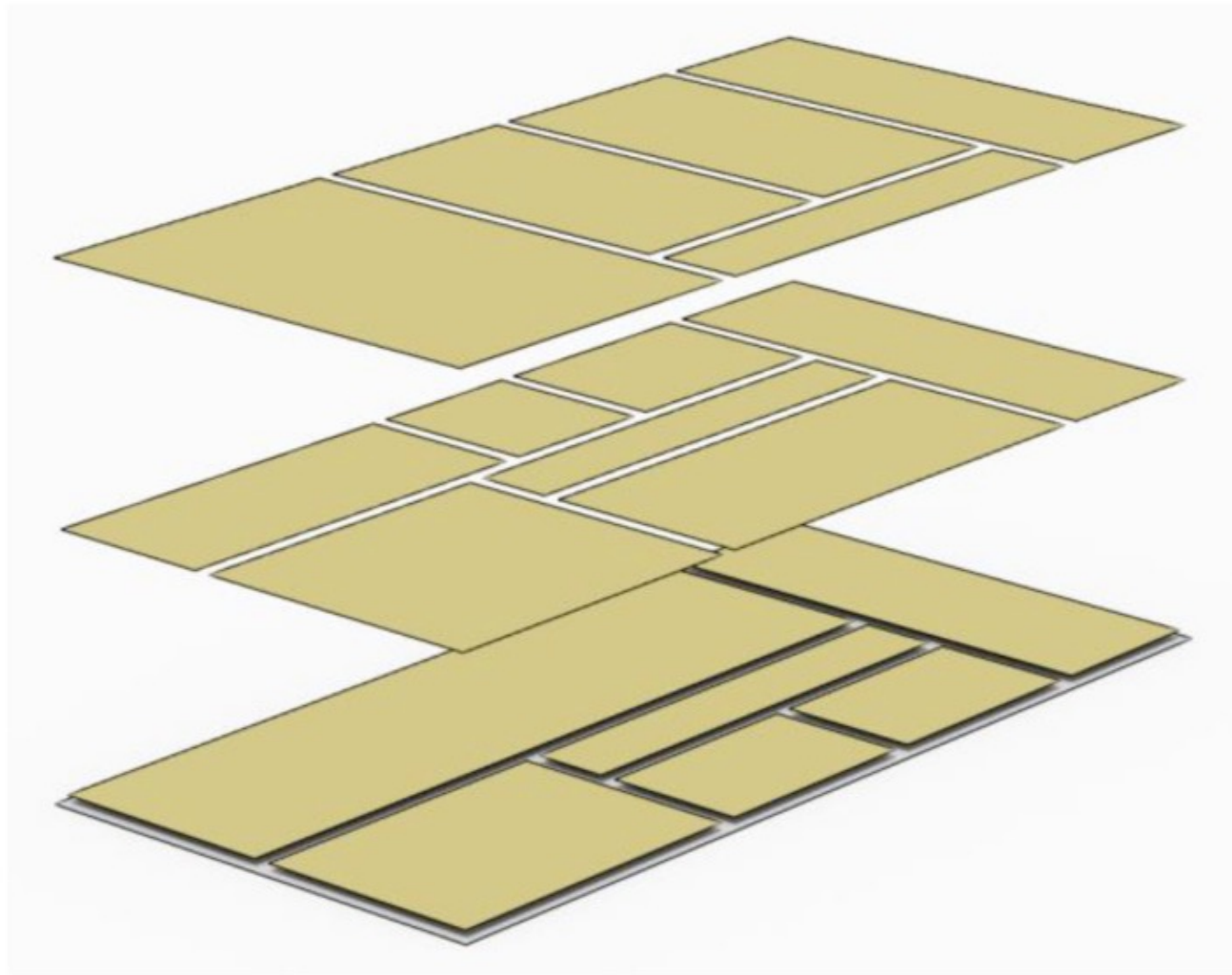


Figure 2. LoD0 representation of the exterior and the interior (rooms) of buildings.

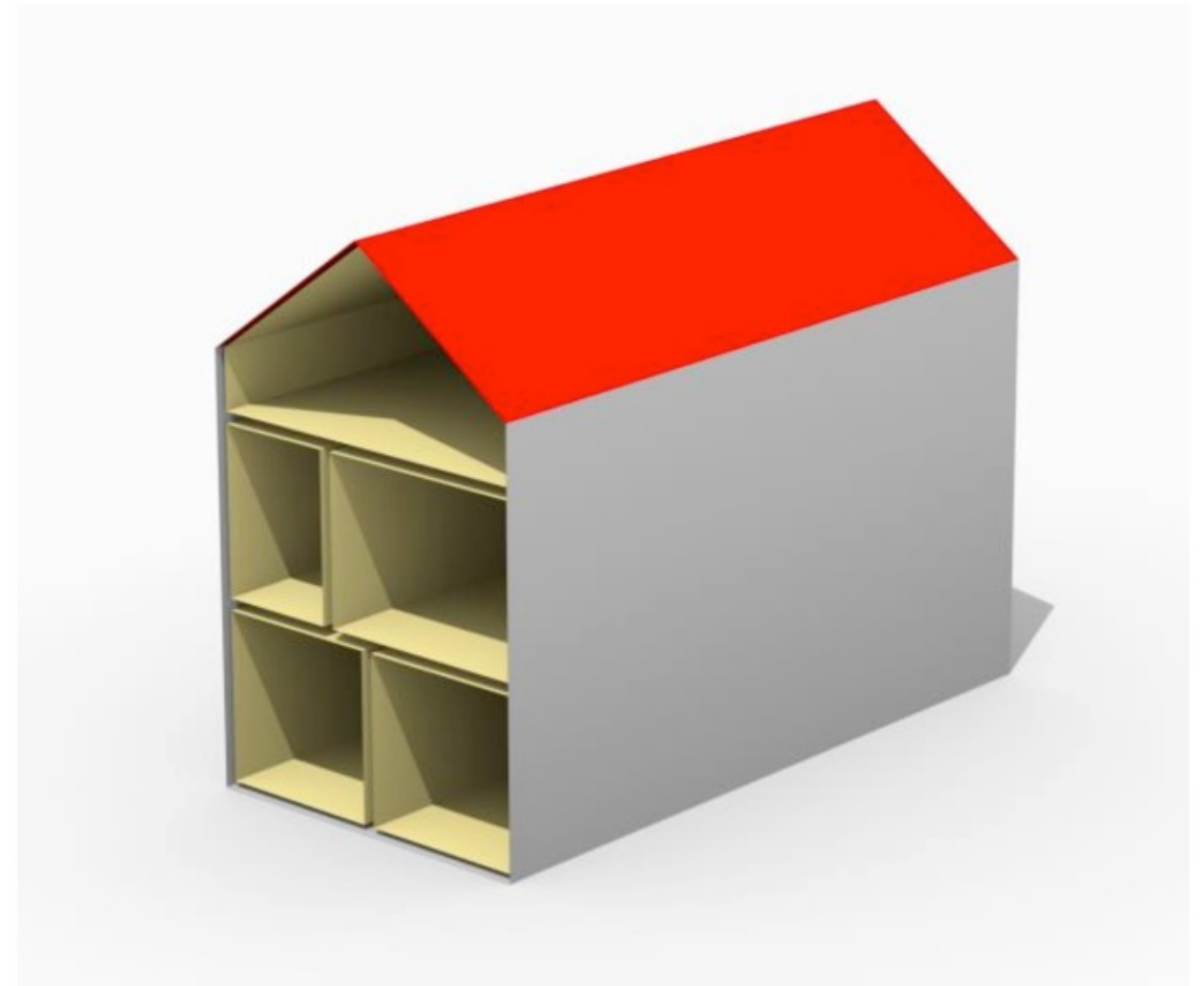


Figure 3. LoD2 representation of a building (exterior) and of rooms.

Löwner, M. O., Gröger, G., Benner, J., Biljecki, F., & Nagel, C. (2016). Proposal for a new LOD and multi-representation concept for CityGML. ISPRS Ann. Photogramm. Remote Sens. Spatial Inf. Sci., IV-2/W1, 3–12. <http://doi.org/10.5194/isprs-annals-IV-2-W1-3-2016>



Extension of the current LOD0 proposal

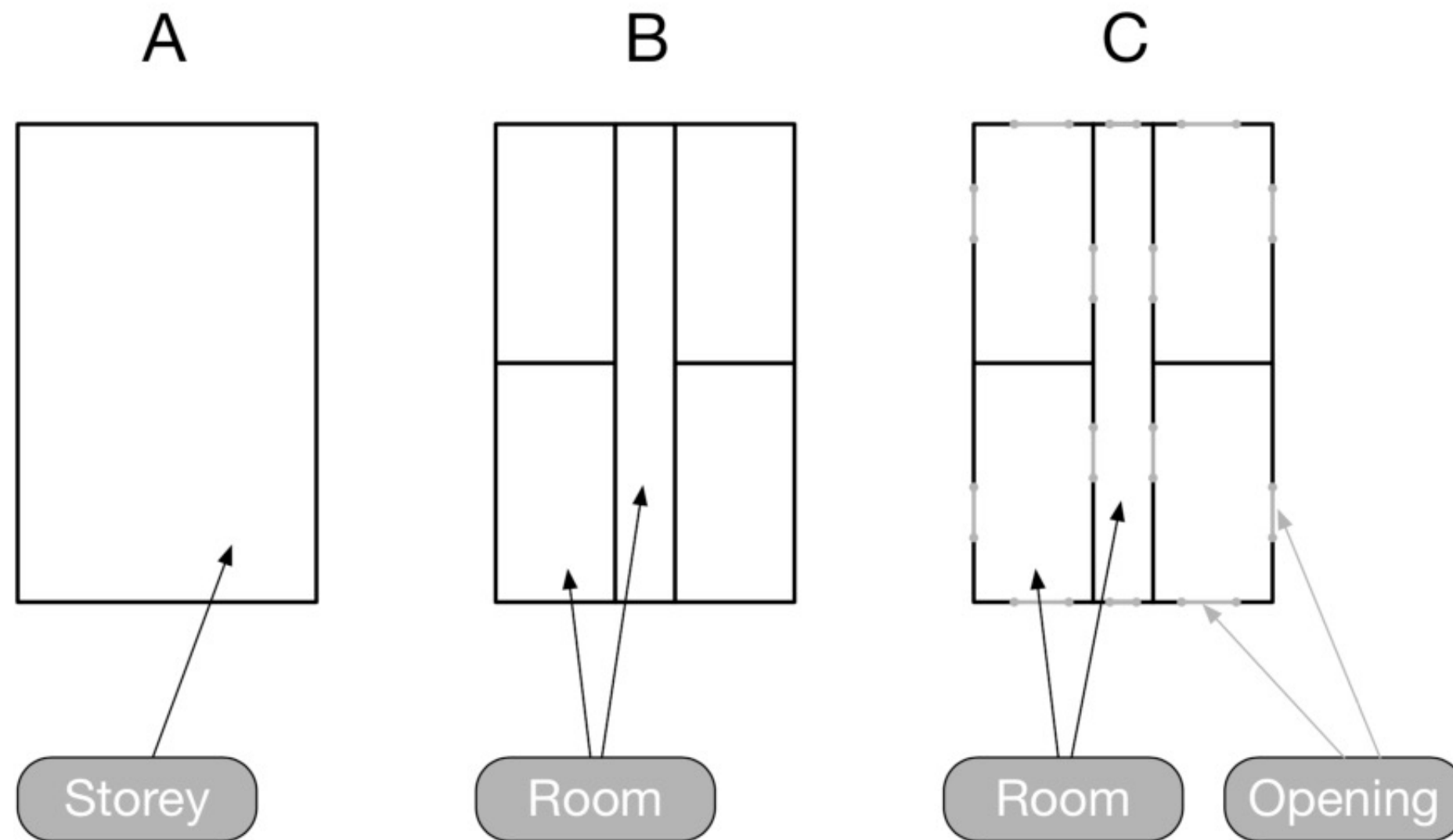


Figure 2. Multiple variants of the realisation of the LoD0 of floor plans. This conceptual illustration does not imply the different ways of the geometric realisation of the features. That is topic is subject of Fig. 3.

Extension of the current LOD0 proposal

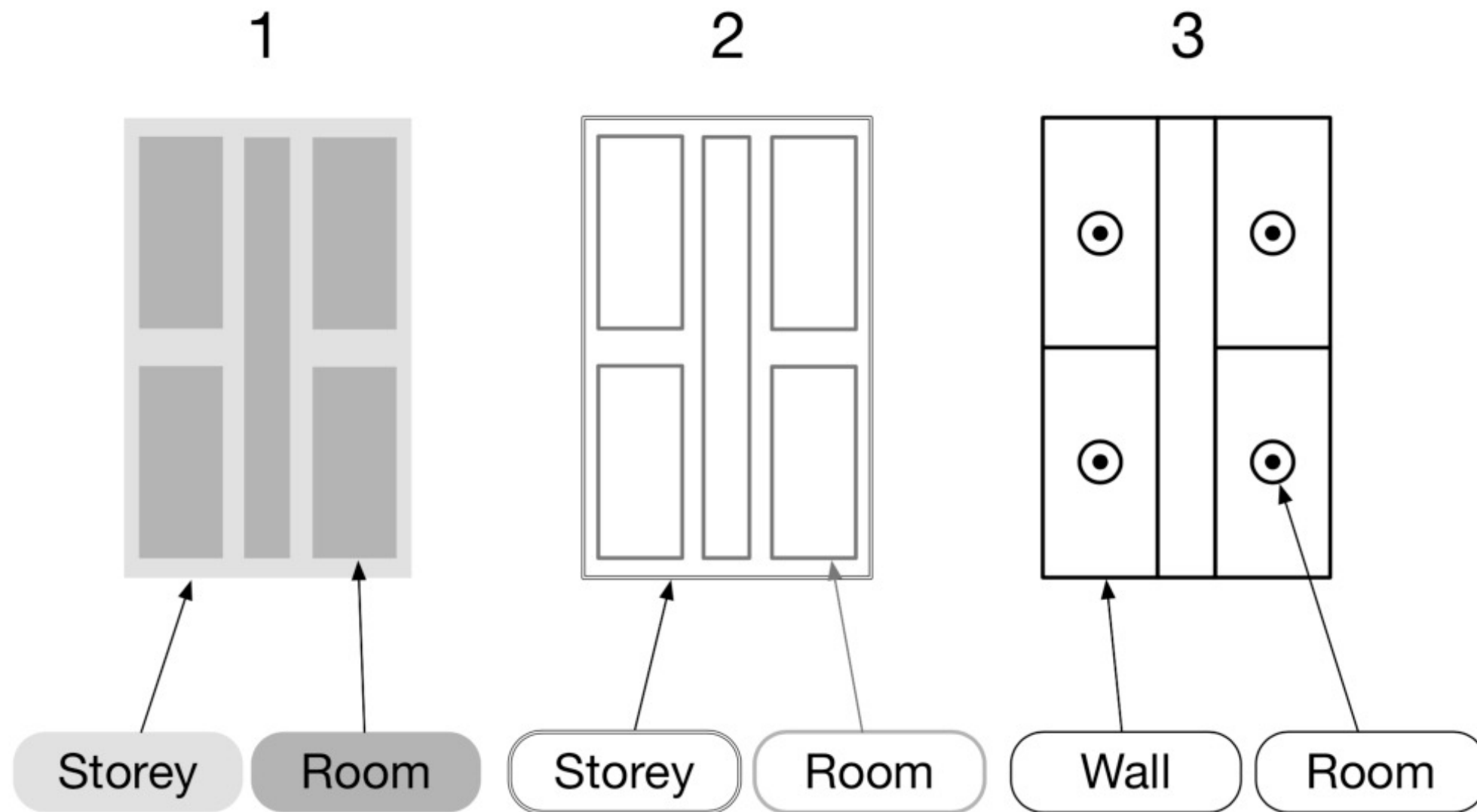
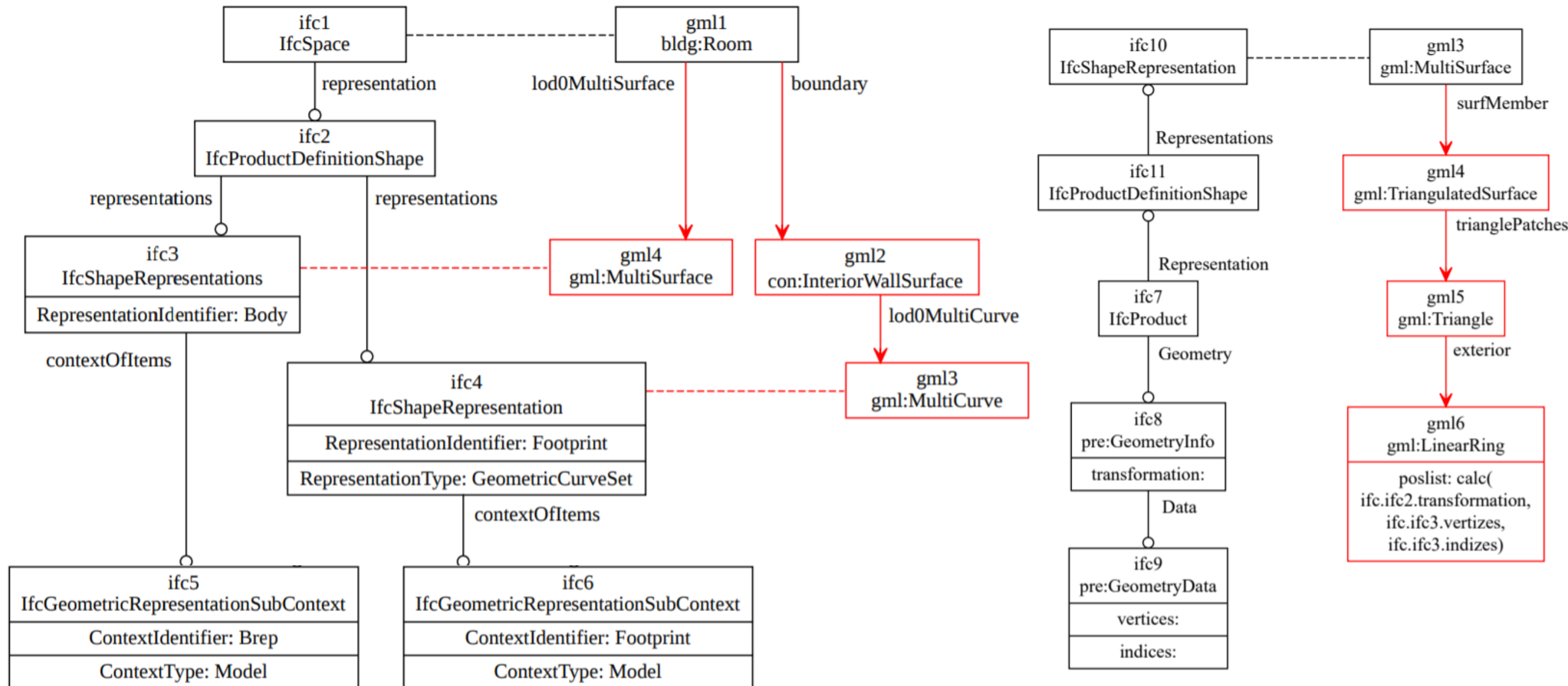
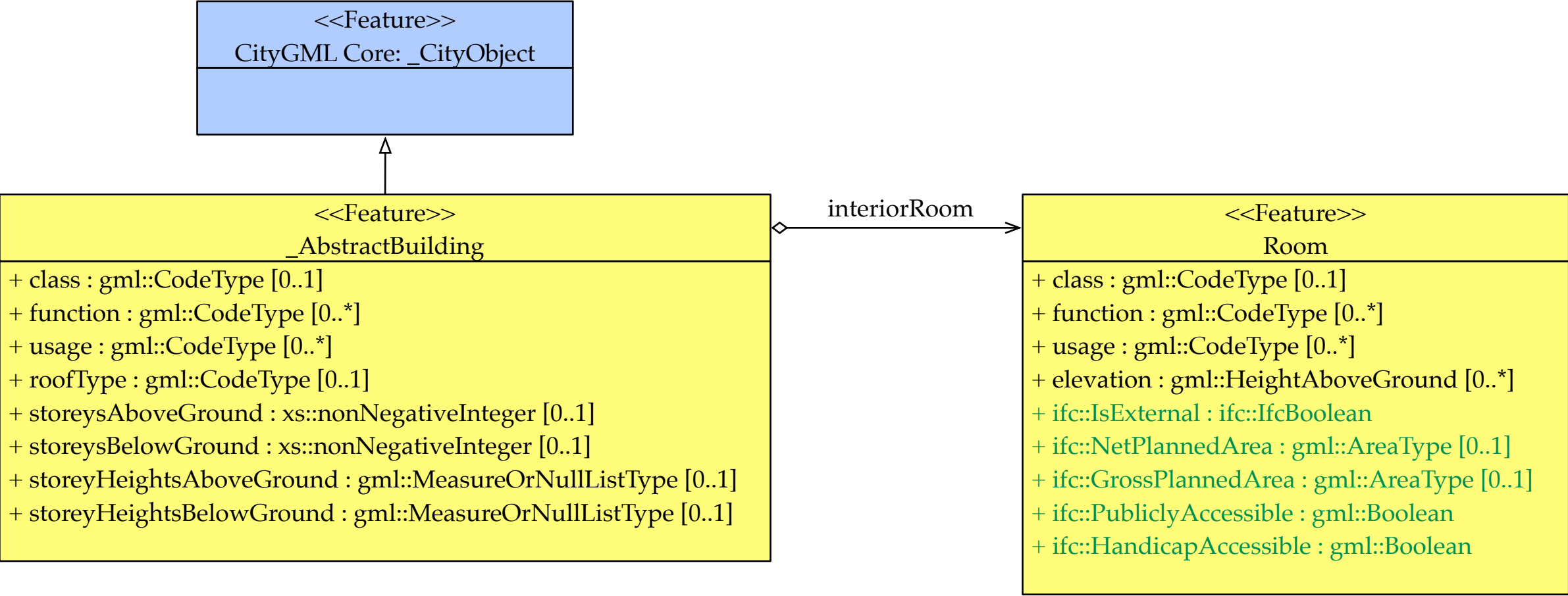


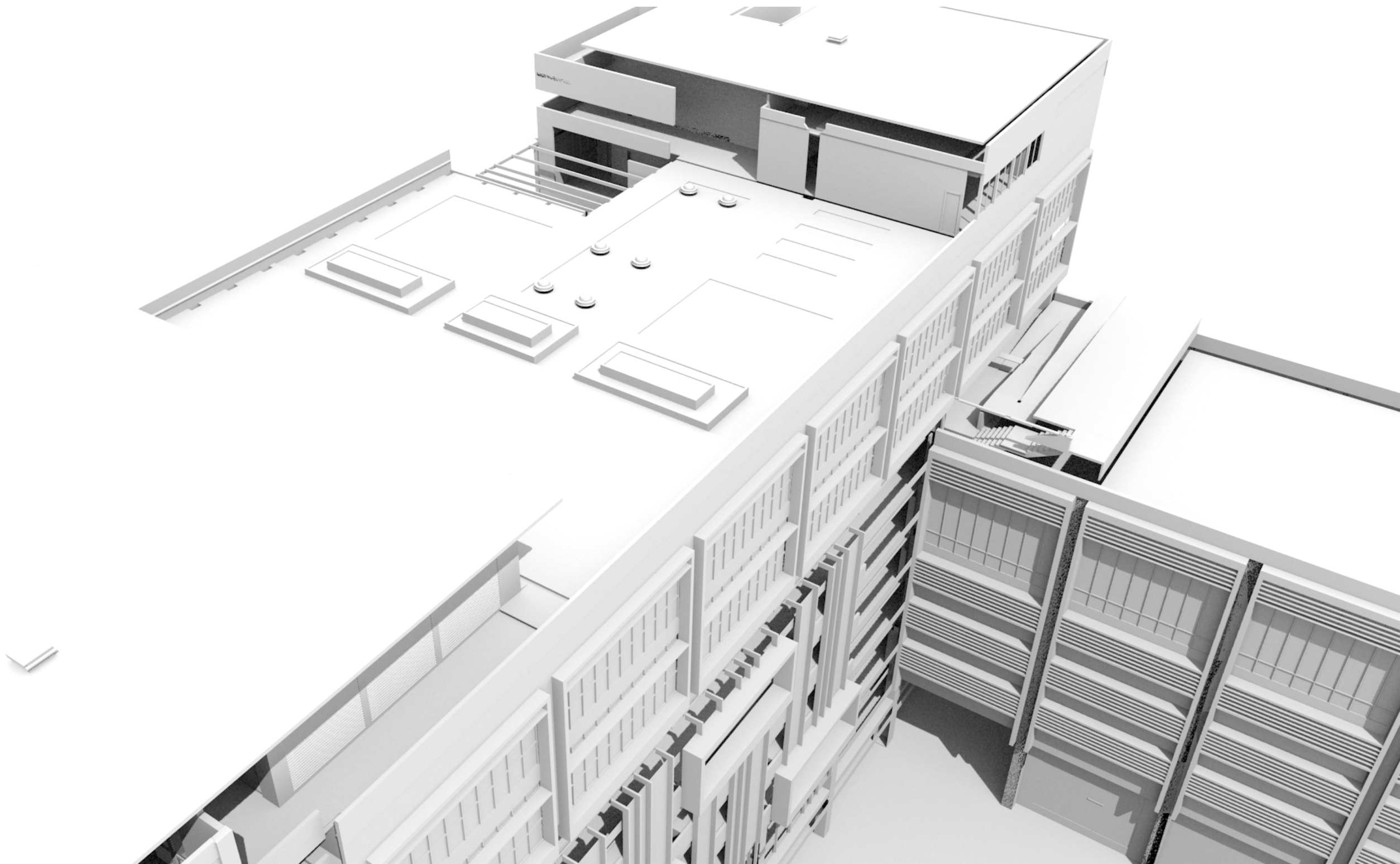
Figure 3. Variants for the geometric representation of floorplan features. This illustration does not imply presence or absence of specific features. For each variant, rooms could be removed or openings could be added (Fig. 2).

Implementation

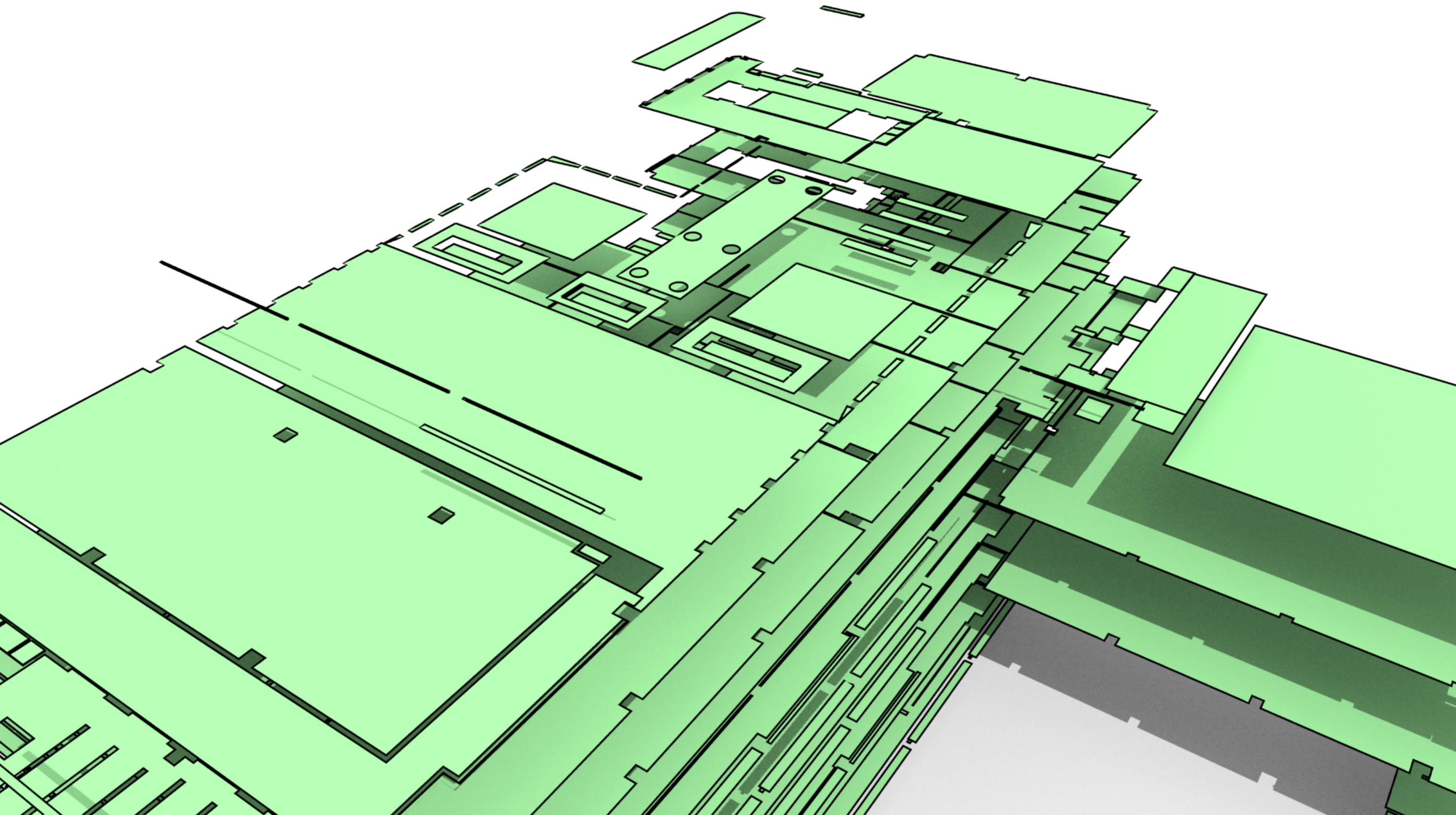




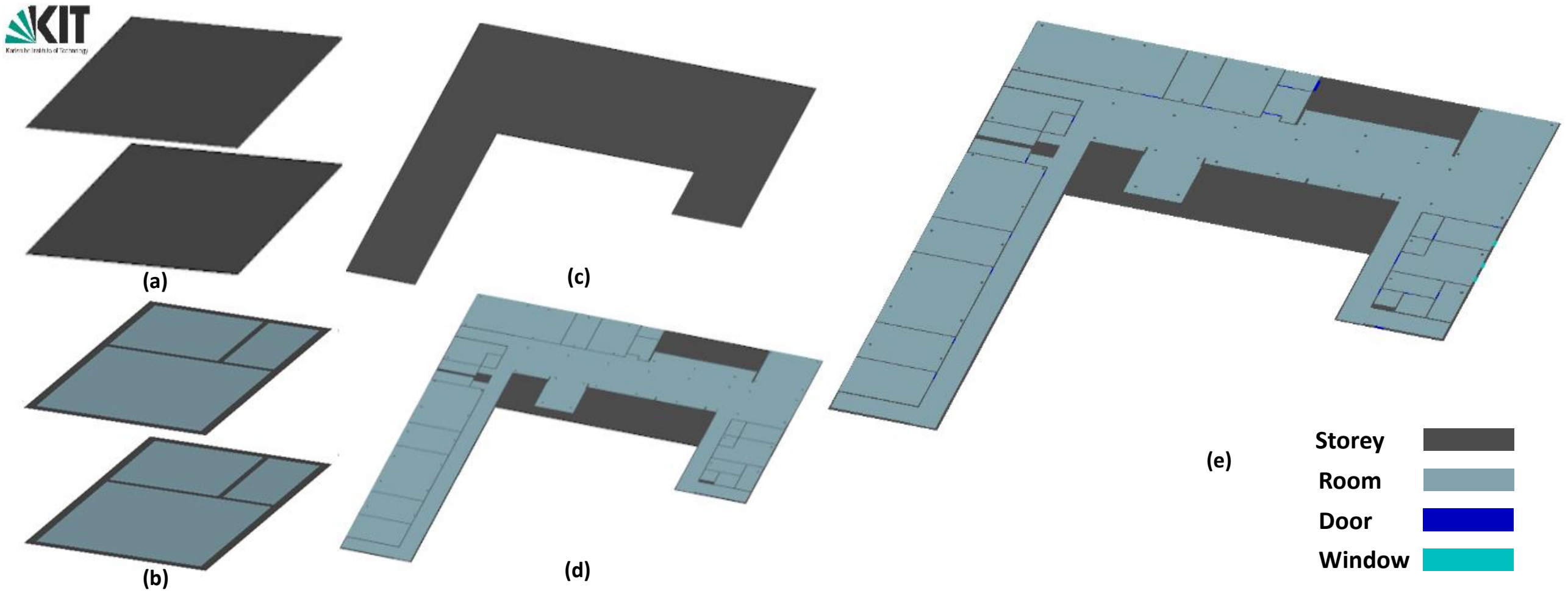
Results



Results



Results

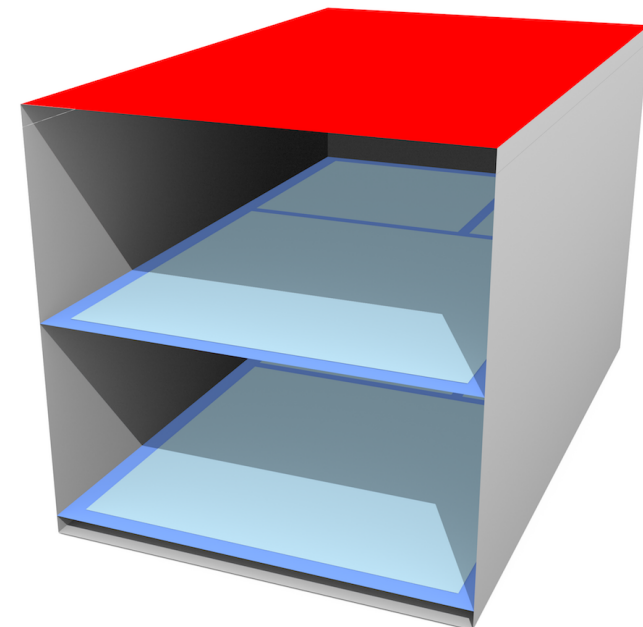


Use cases

- Emergency, resilience and safety planning
- Indoor navigation
- Macro-scale energy demand estimation

Conclusions

- Floor plans may sound simple, but there are many ways to model them and not many ways to find data
- BIM/IFC is obviously one of the principal channels to source floor plans
- First CityGML 3.0 LOD0 dataset?
- Future work: explore integration with exterior (leading to multiple combos)



Thanks



<http://ifc2citygml.github.io>

