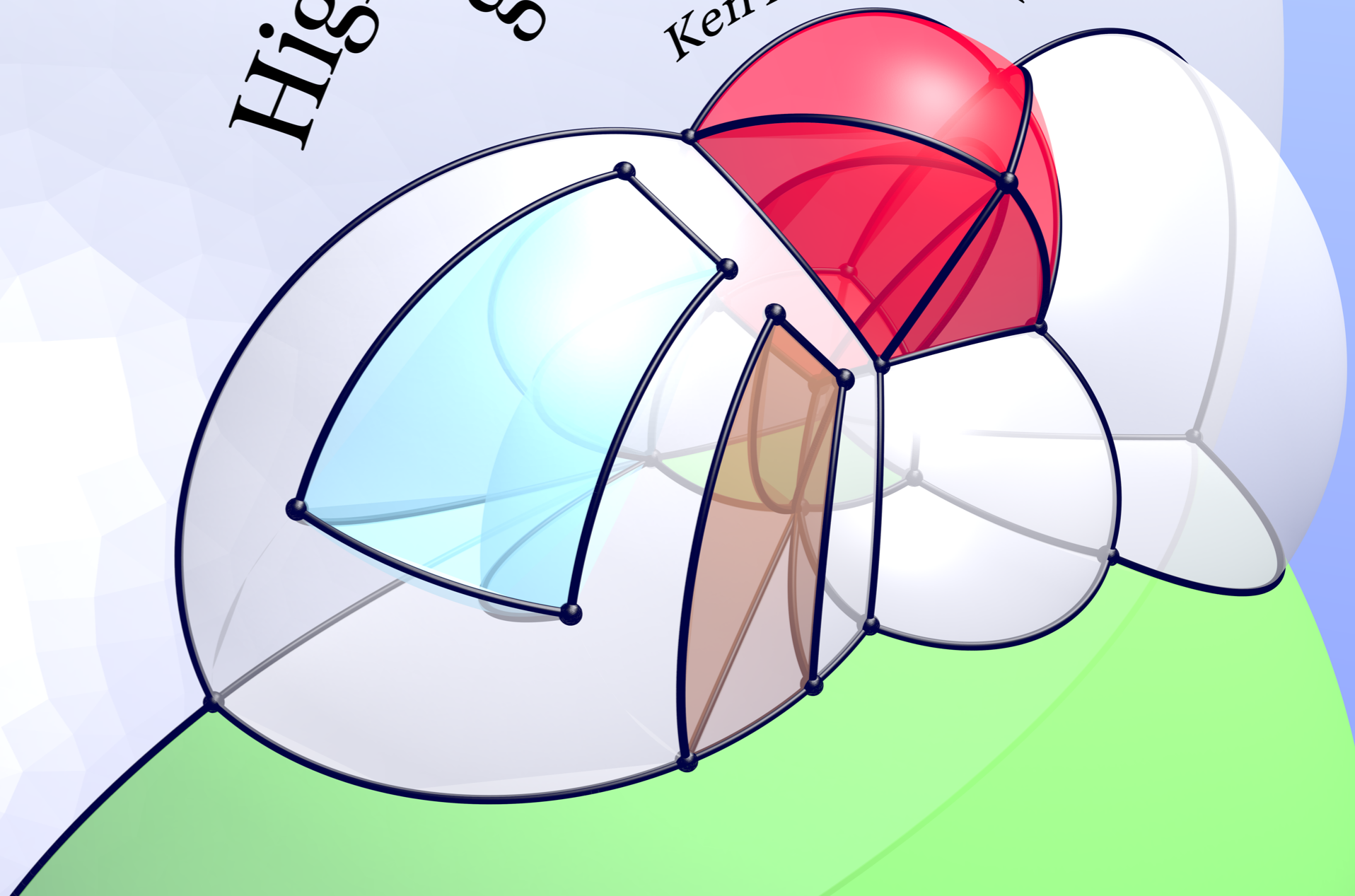
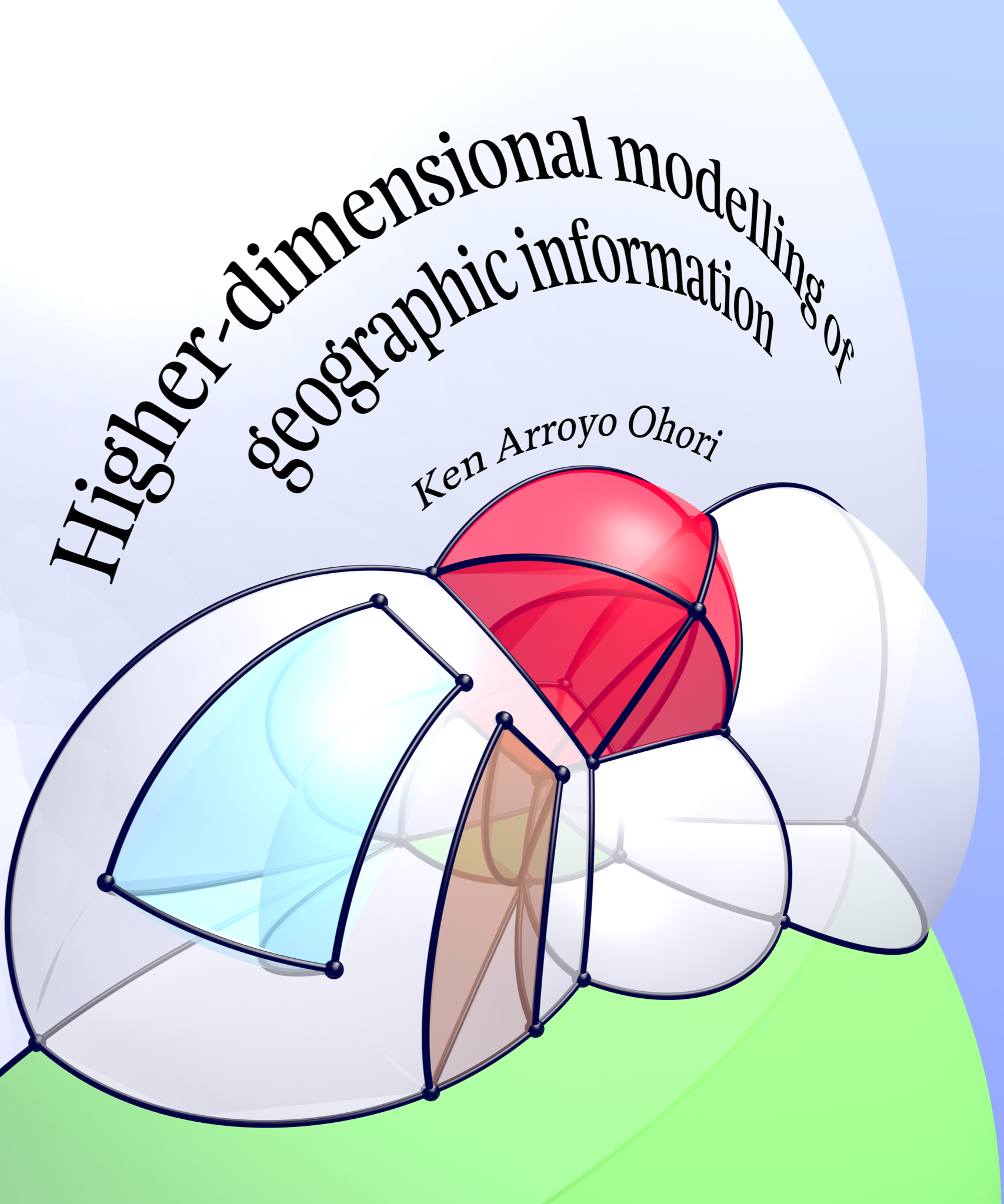


Higher-dimensional modelling of geographic information

Ken Arroyo Ohori





Higher-dimensional modelling of
geographic information

Ken Arroyo Ohori

Programme

12:00 presentation

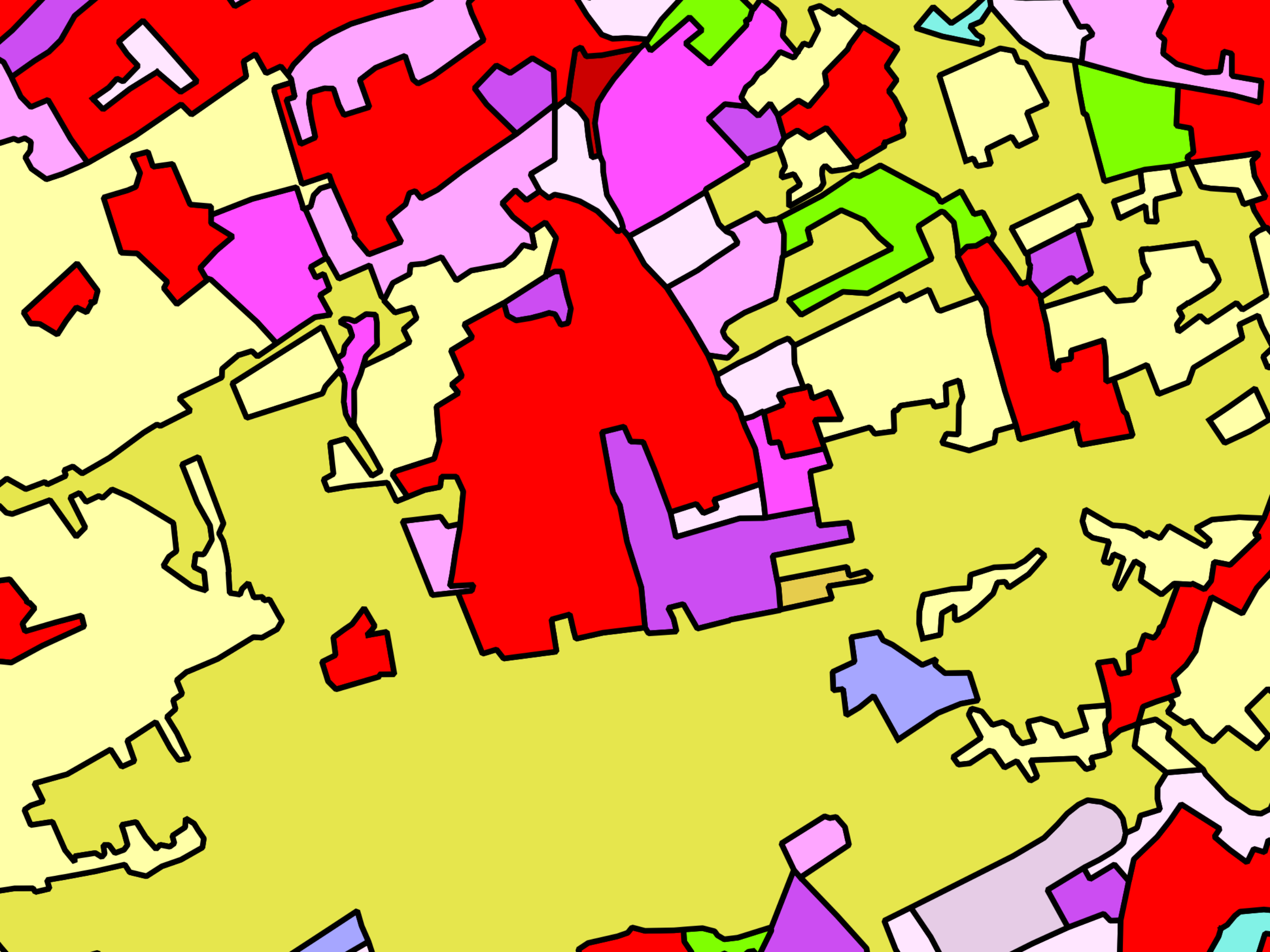
12:30 defence

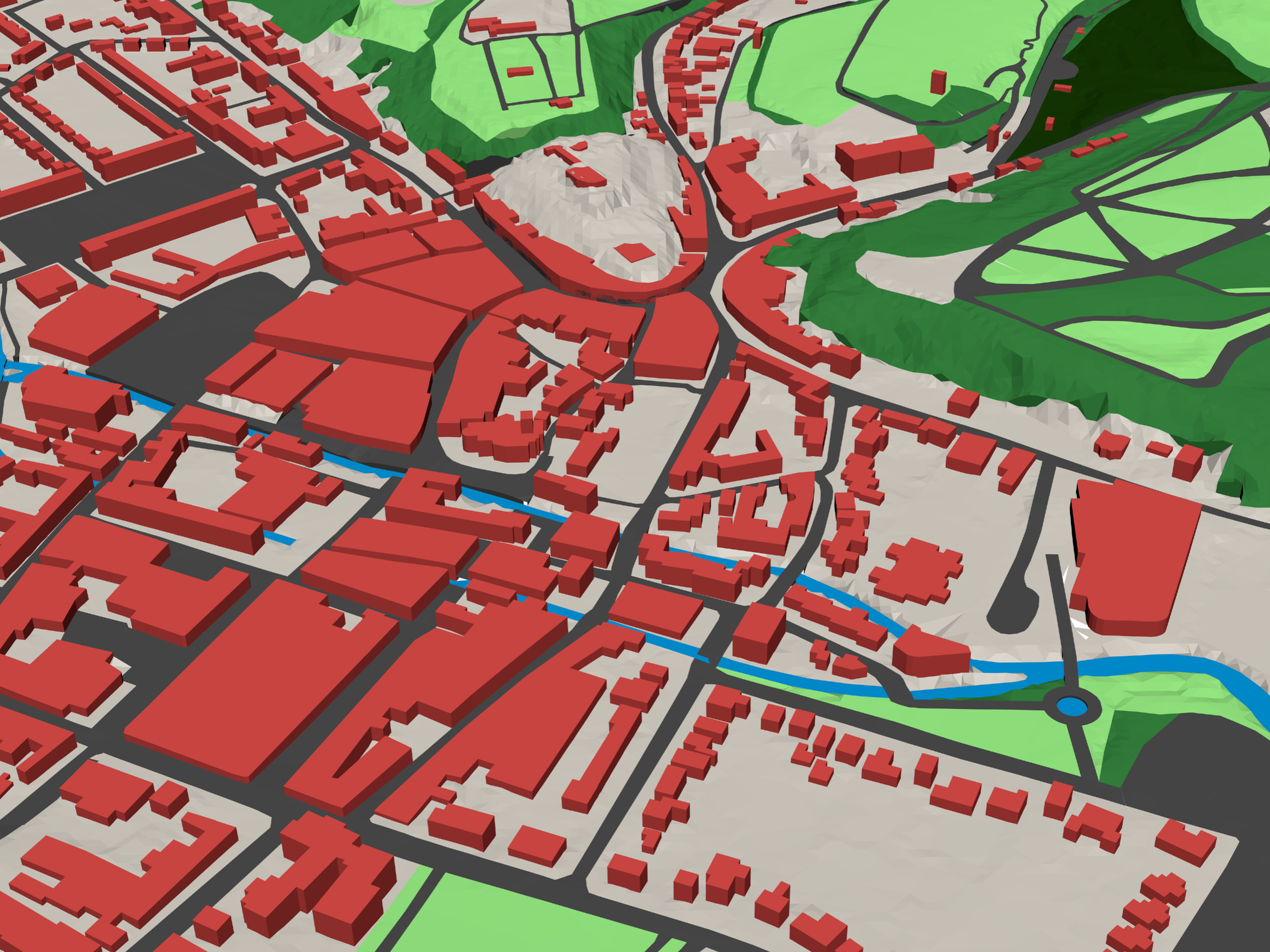
then (?)

~13:45 ceremony

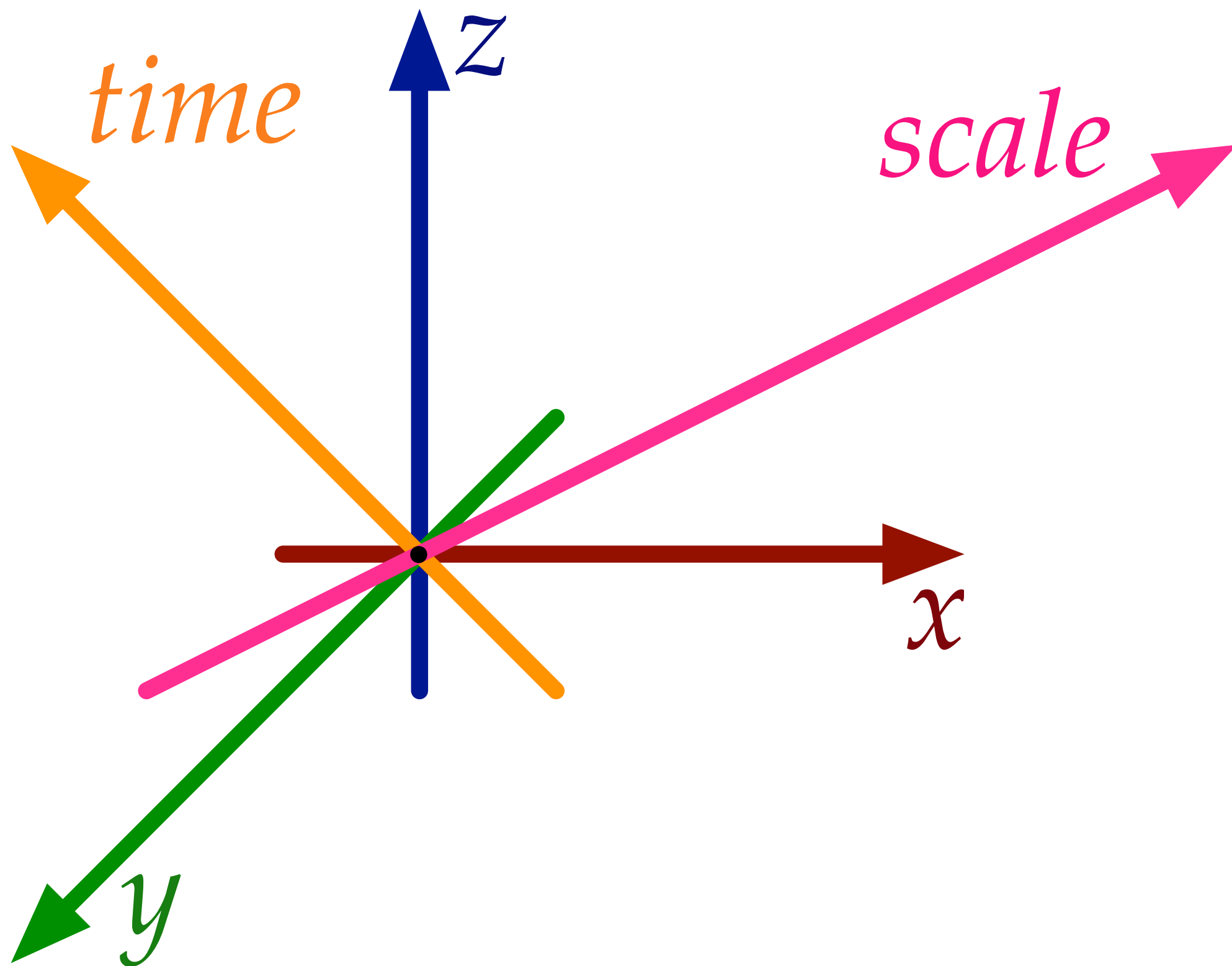
~14:00 drinks

Geographic information

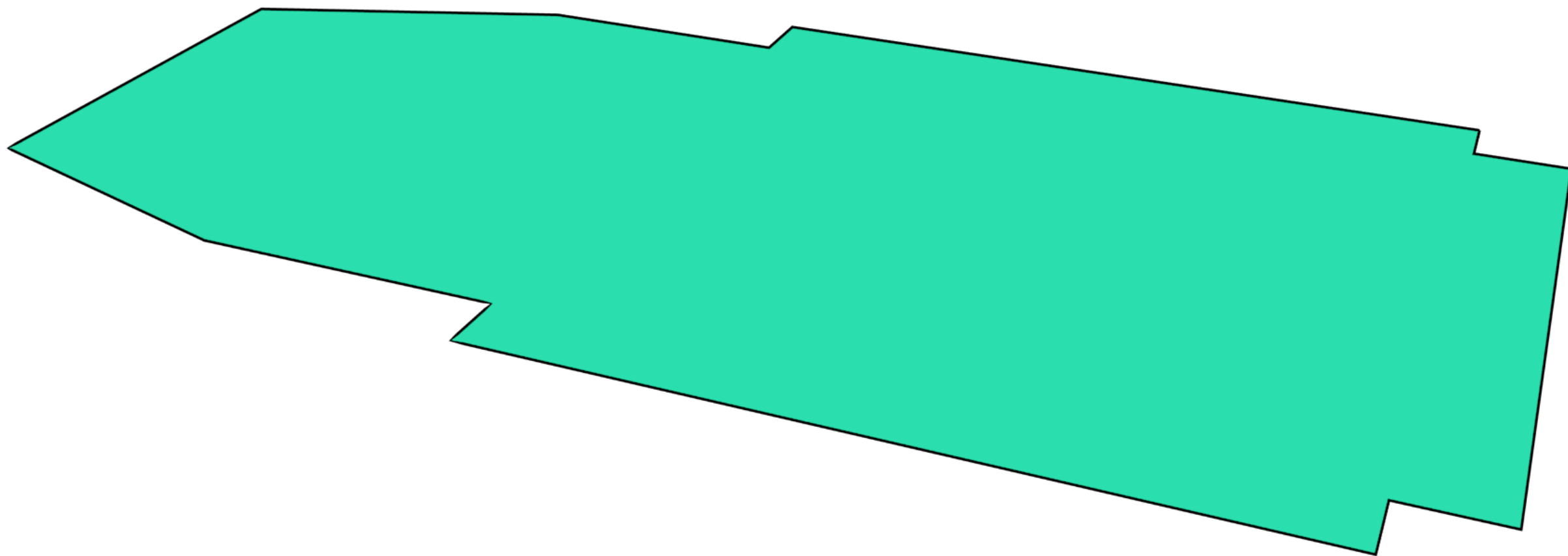


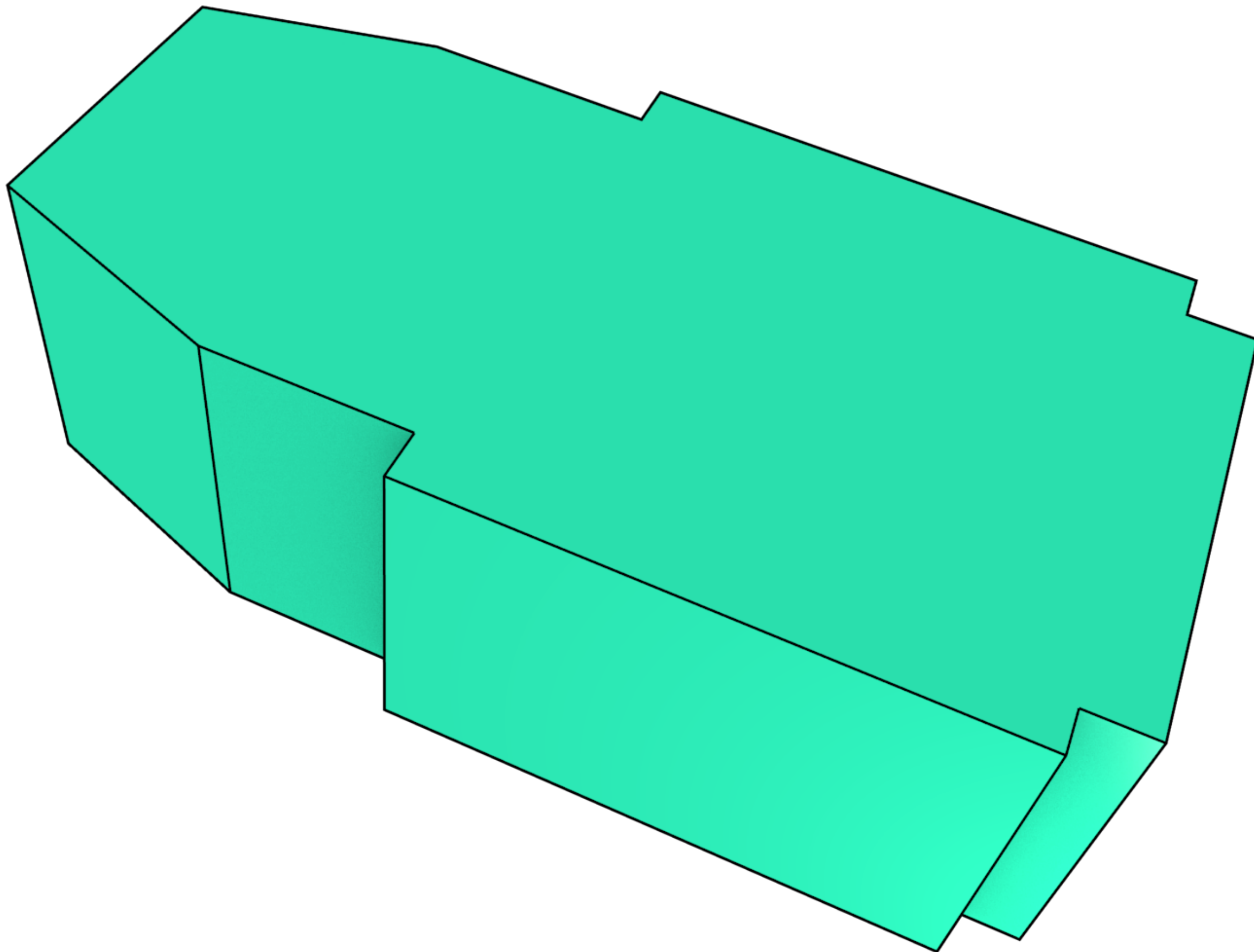


Higher dimensions?

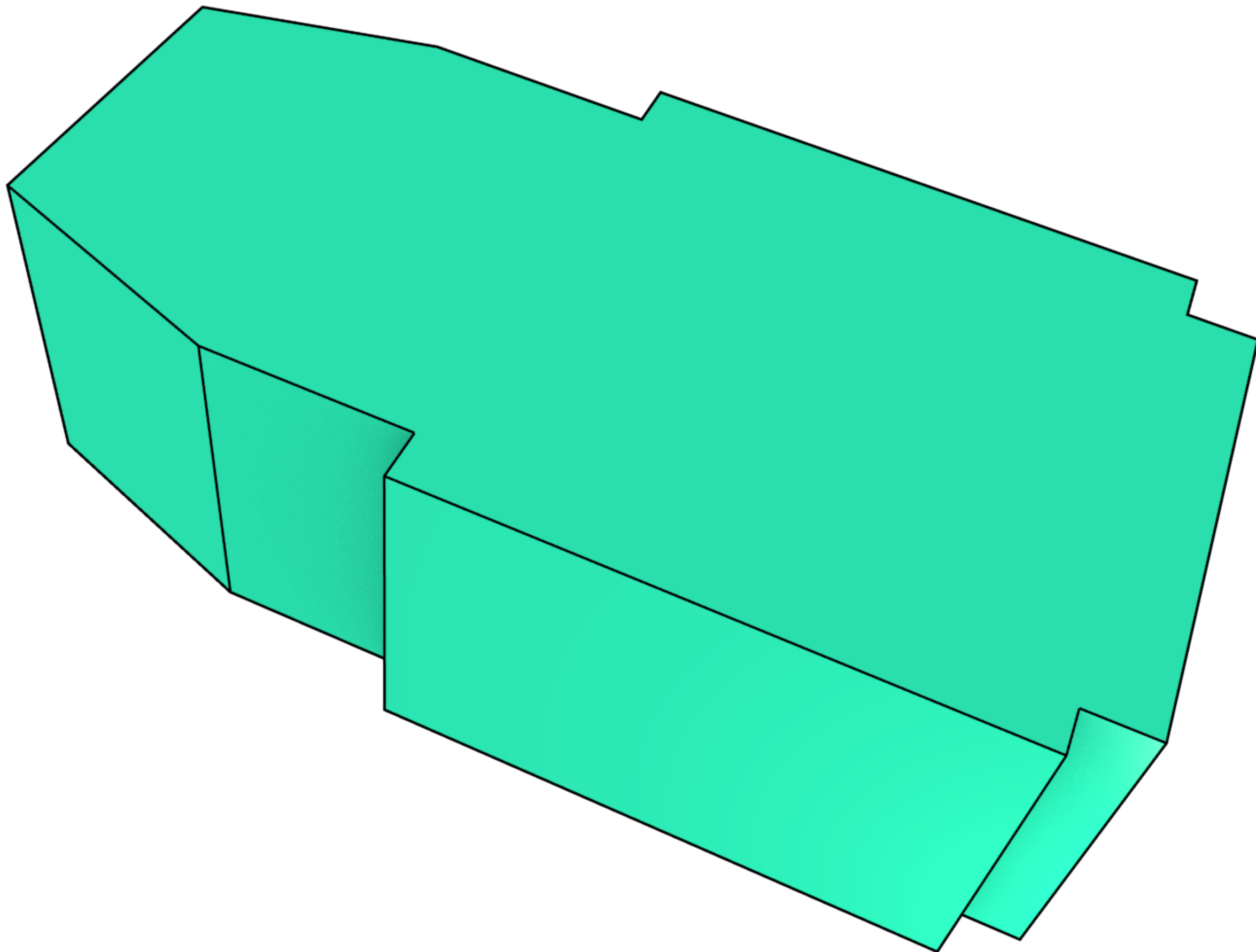


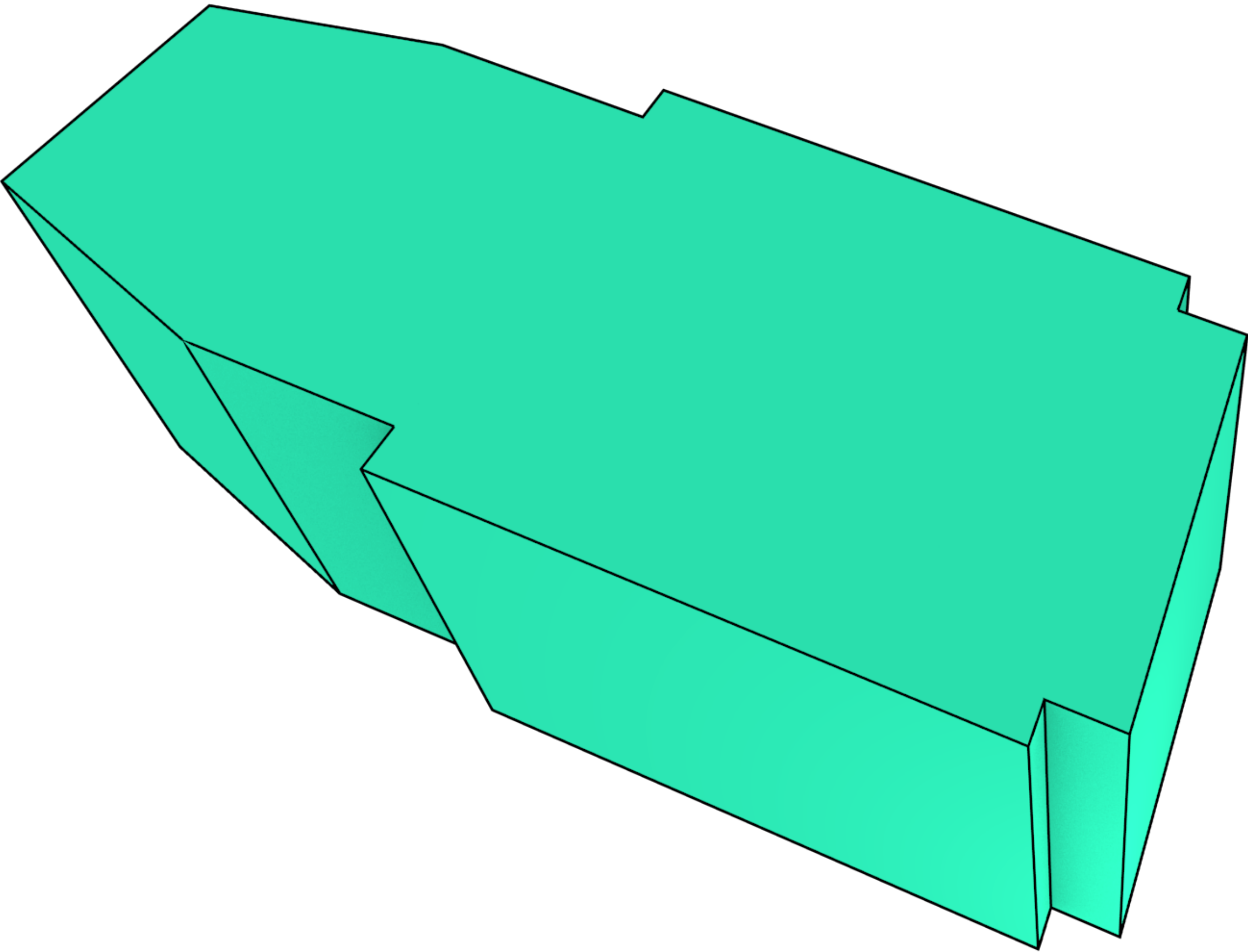
An example:
extrusion from 2D to 3D

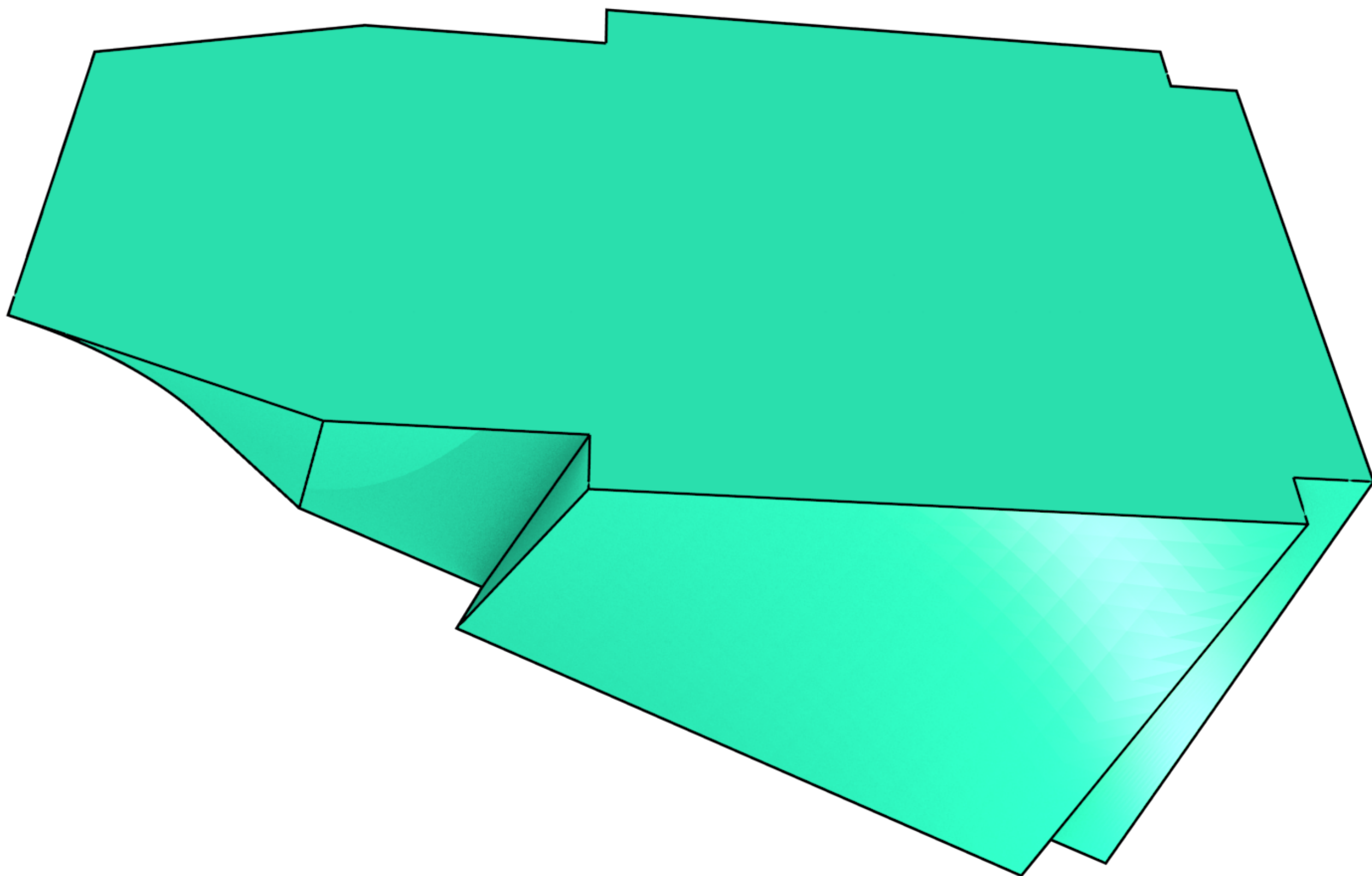


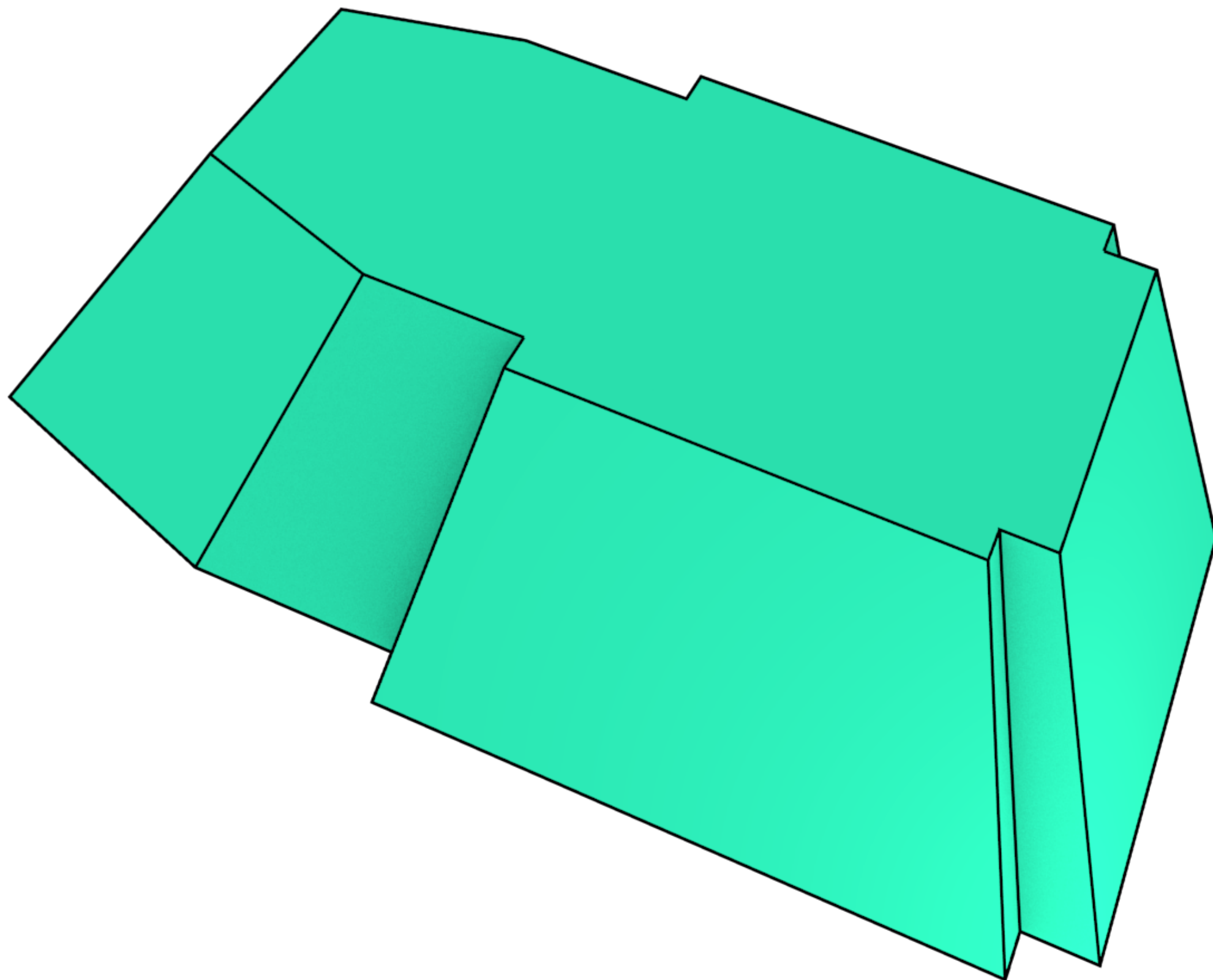


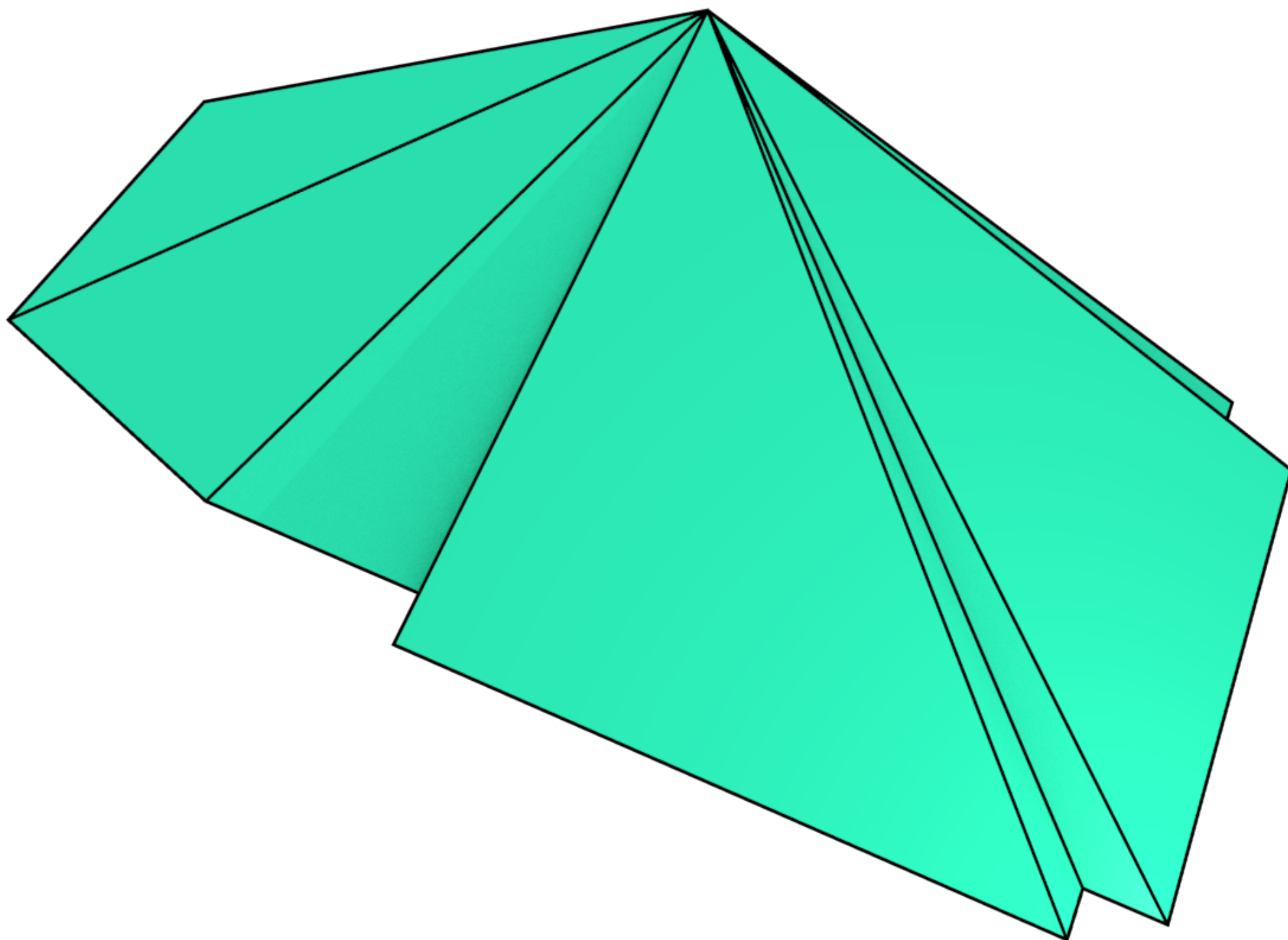
Applying some
changes

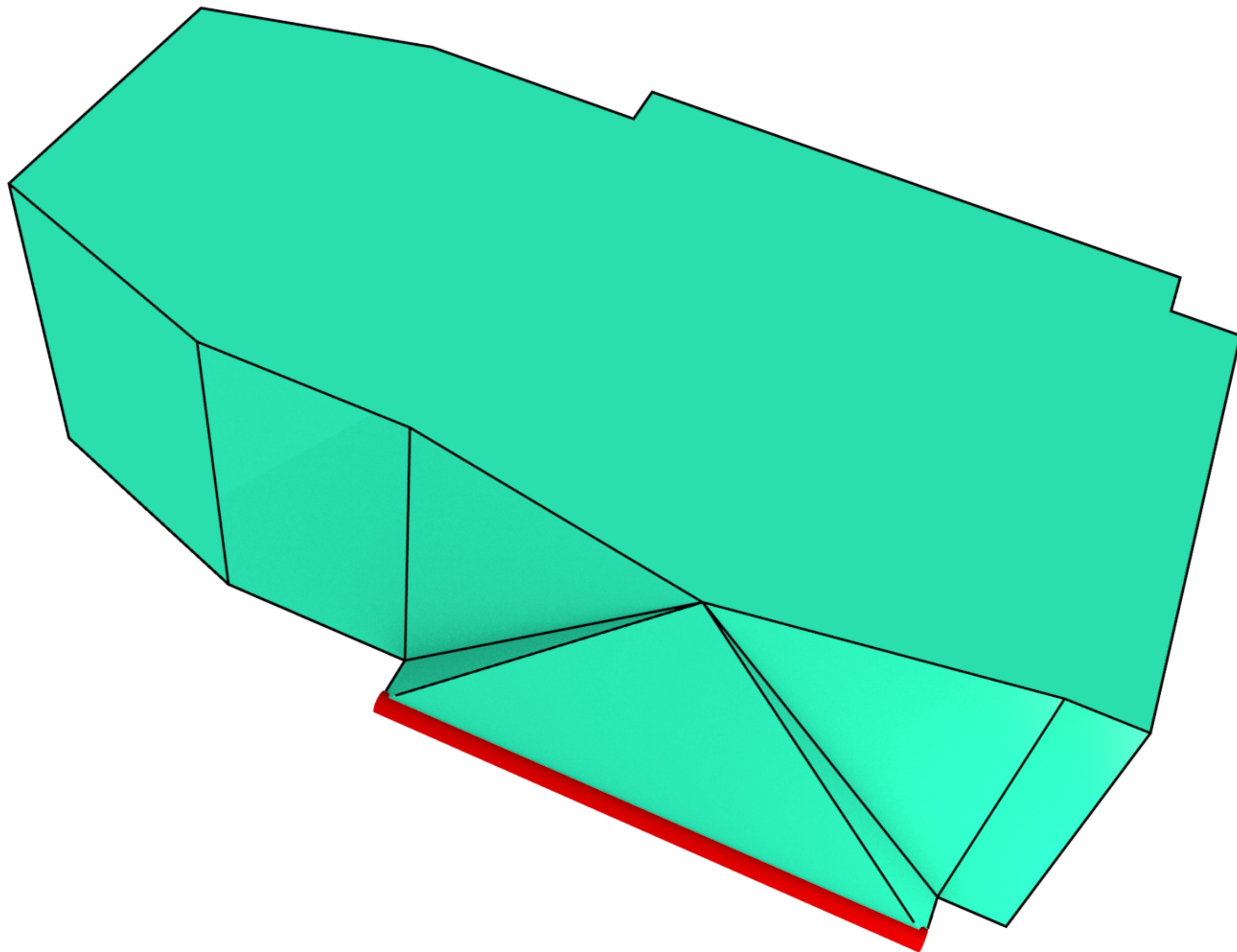




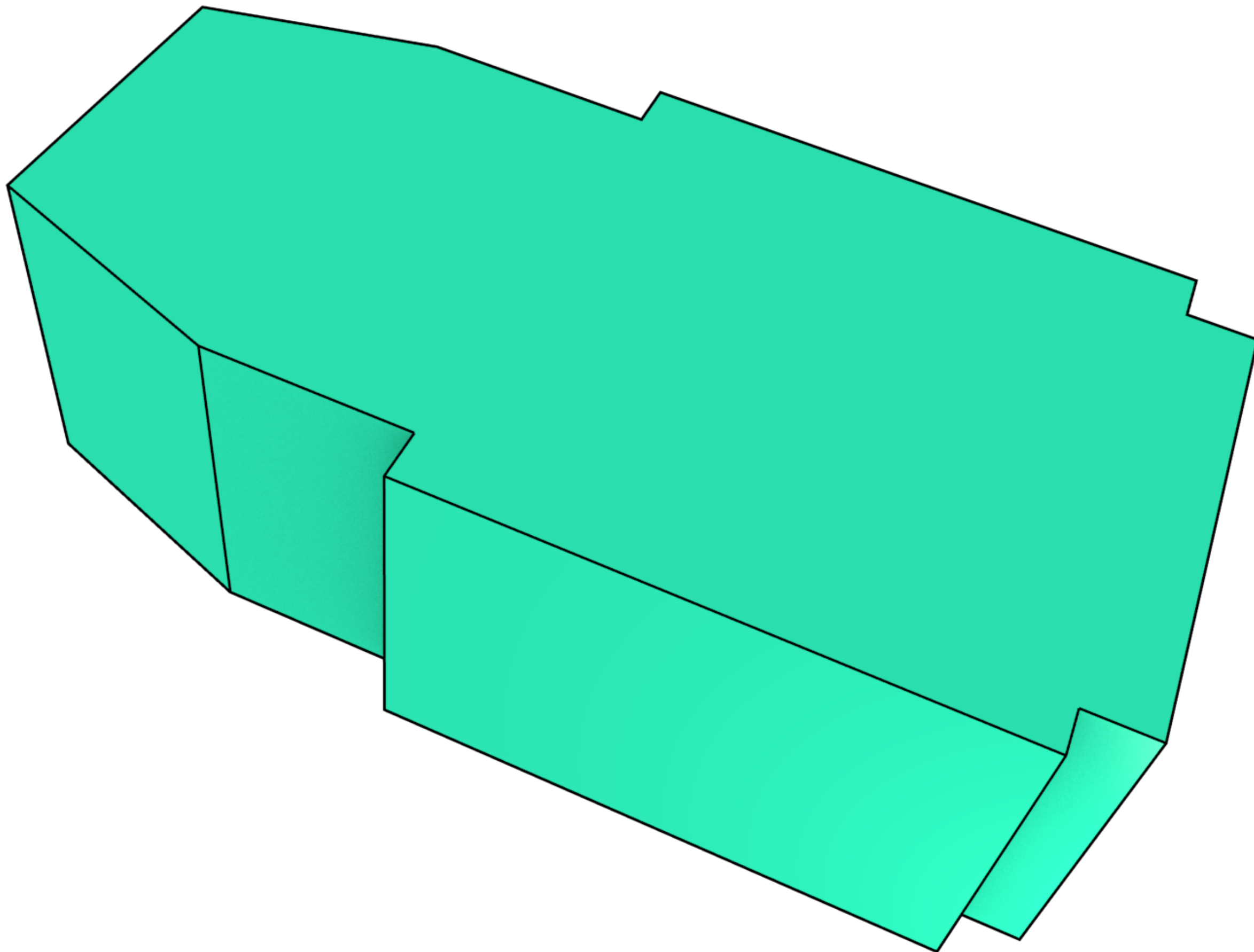


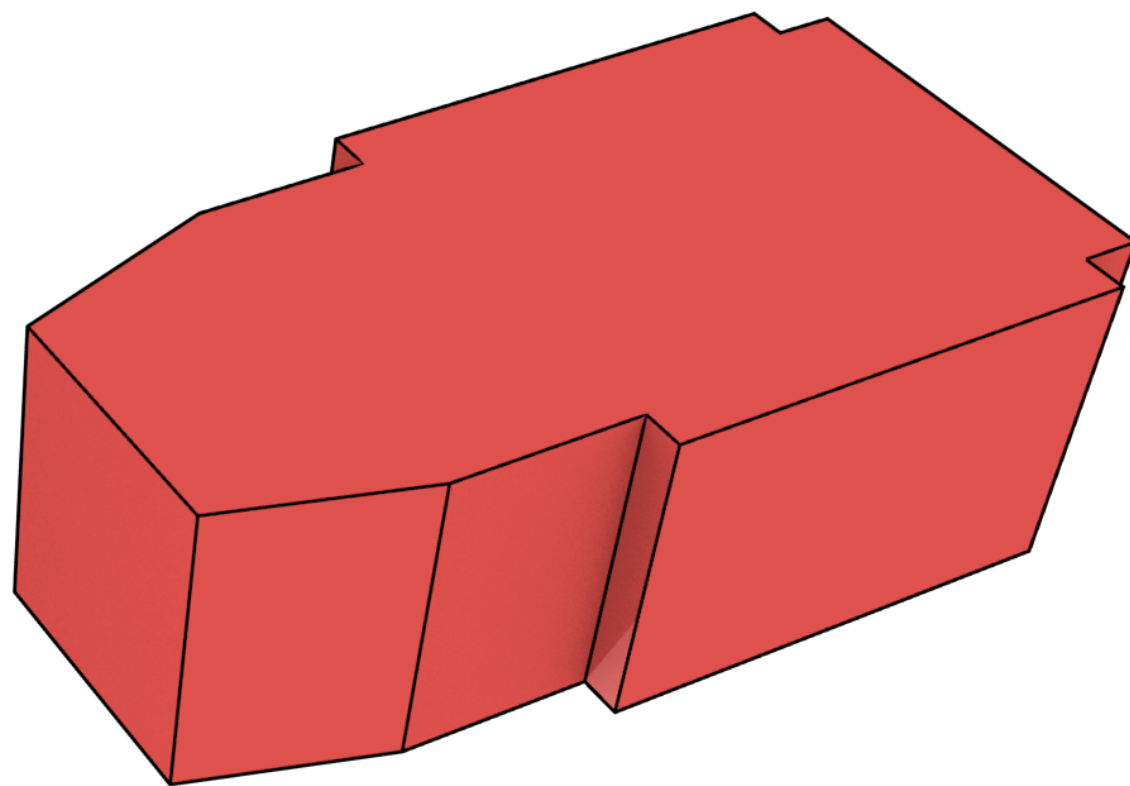
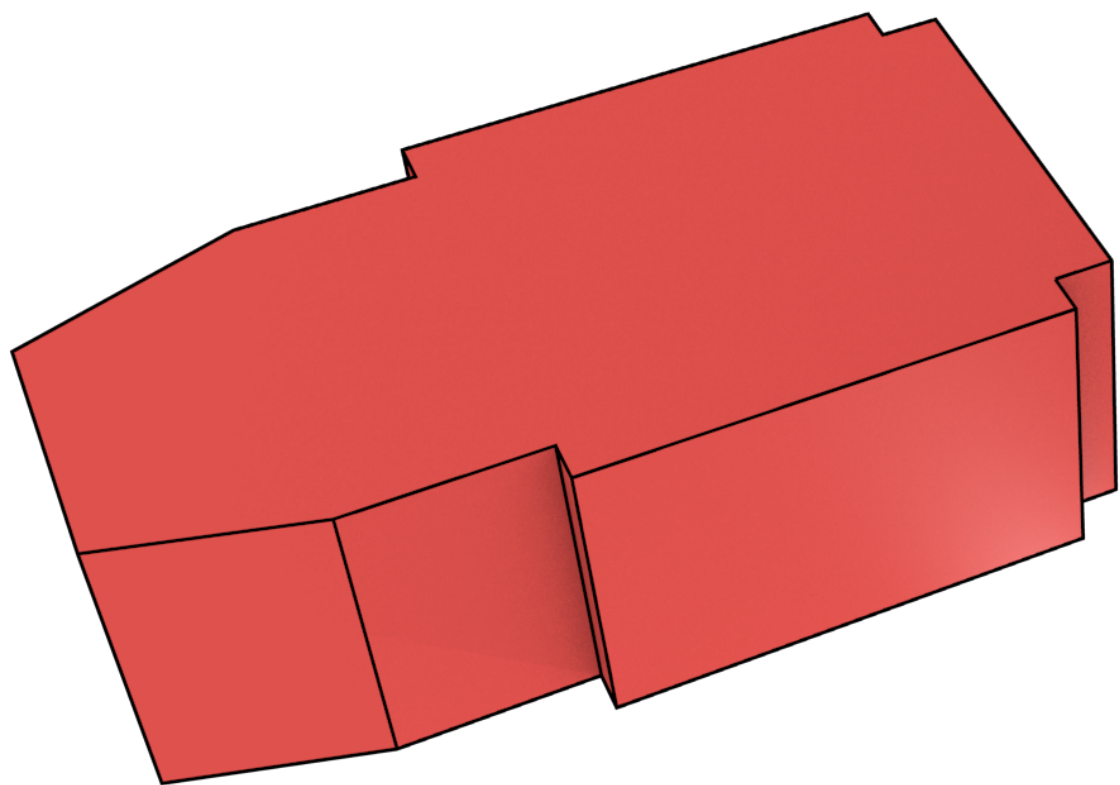


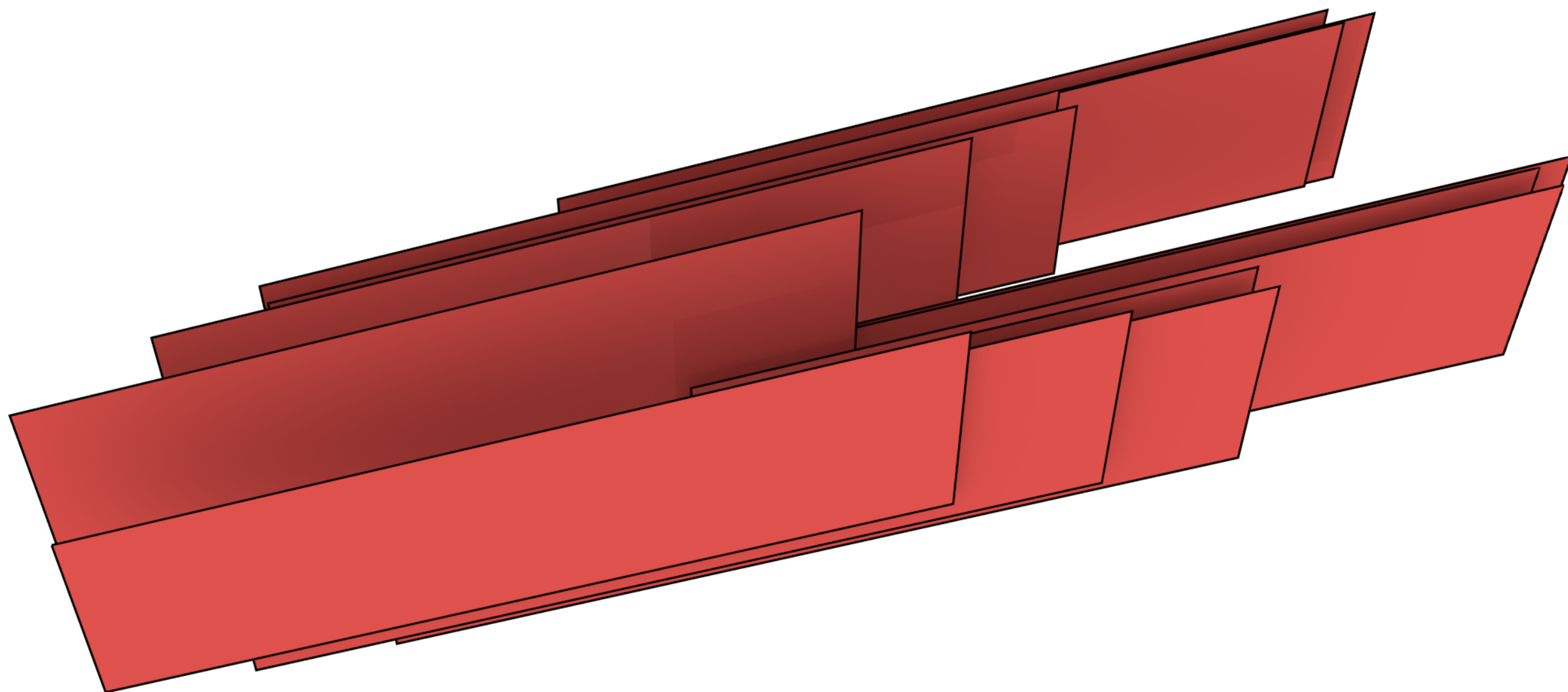


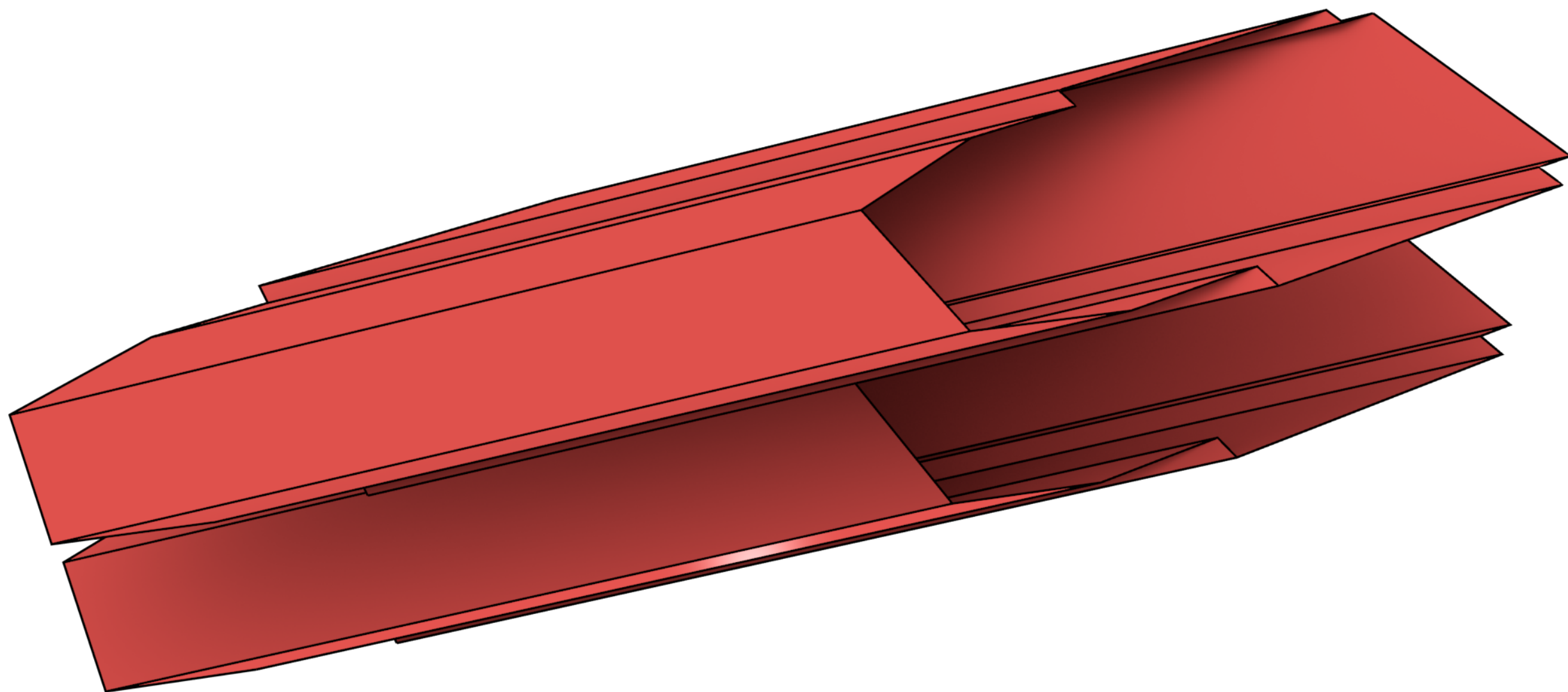


Now: from 3D to 4D

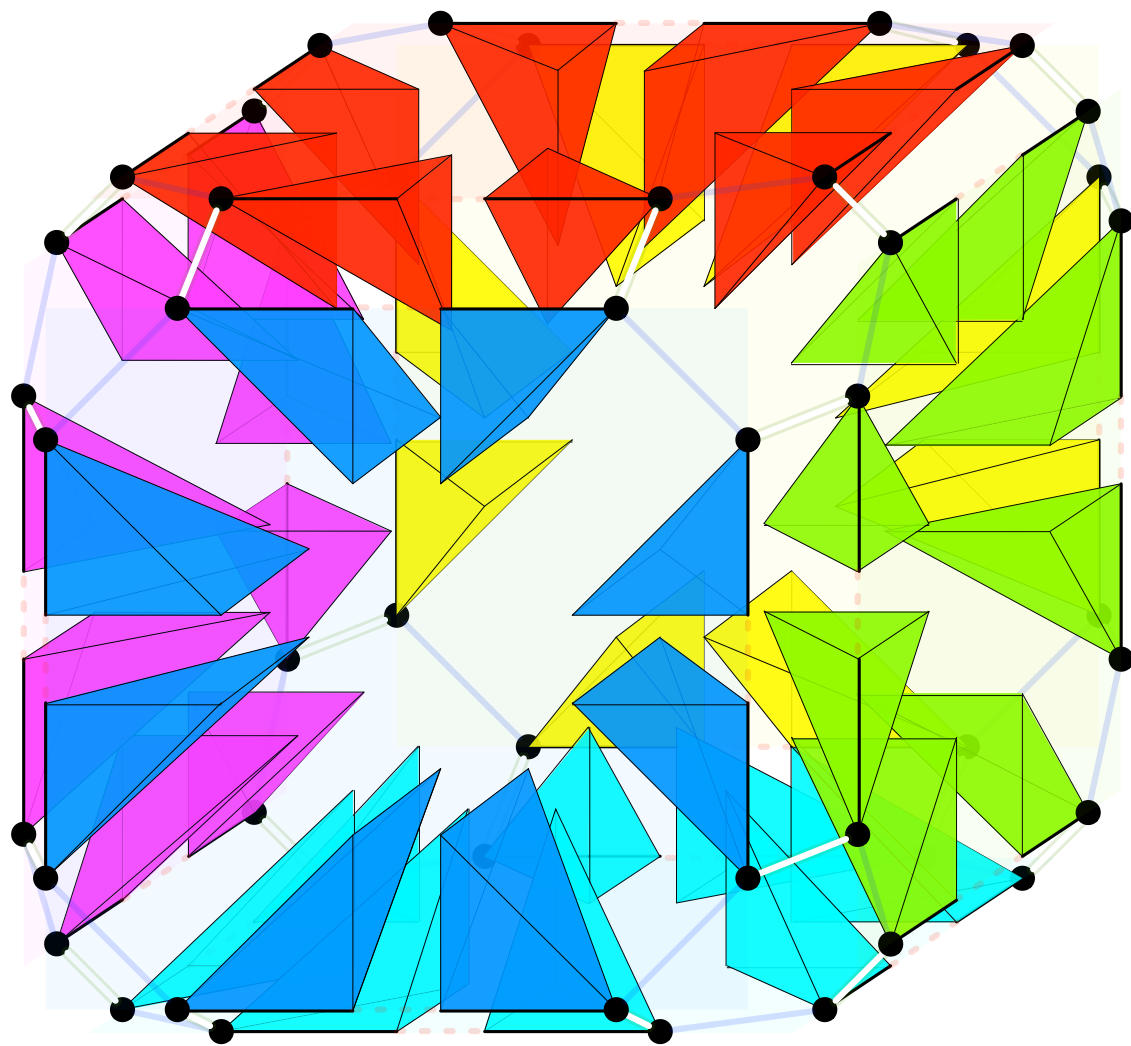




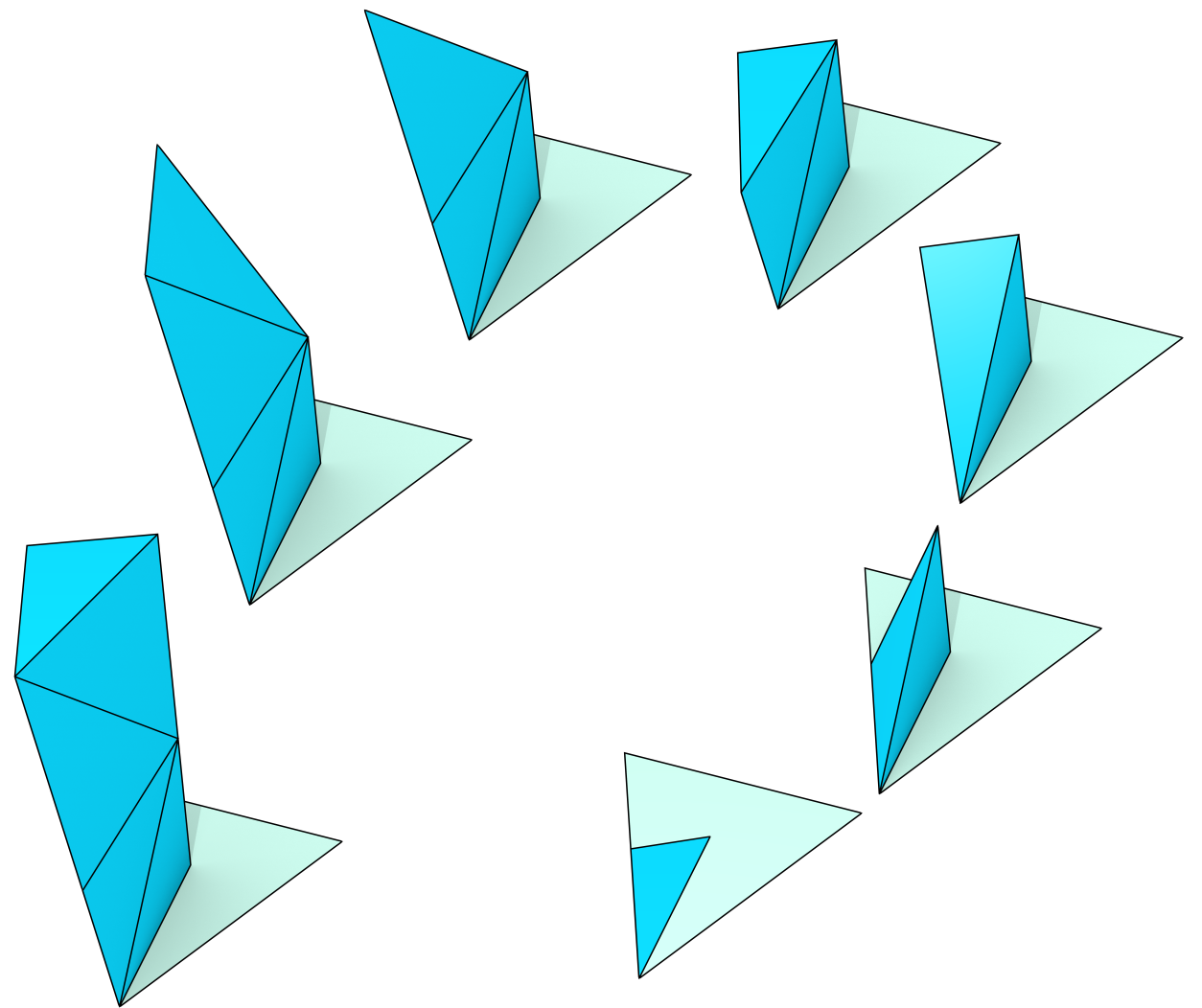




My PhD in one slide



Representations



Operations

Title slide: 4D house

